

ELL antibody

Catalog Number: 110280

Product name

ELL antibody

Specificity

human, mouse; other species not tested.

Antibody description

ELL Rabbit Polyclonal antibody. Positive WB detected in HeLa cells, HEK-293 cells, HL-60 cells, mouse testis tissue. Positive IHC detected in human ovary tumor. Observed molecular weight by Western-blot: 68-80kd

Preparation

This antibody was obtained by immunization of ELL recombinant protein (Accession Number: NM_006532). Purification method: Antigen affinity purified.

Formulation

PBS with 0.1% sodium azide and 50% glycerol pH 7.3.

Storage

Store at -20°C. DO NOT ALIQUOT

Clonality

Polyclonal

Ig Type

Rabbit IgG

Applications

ELISA, WB, IHC

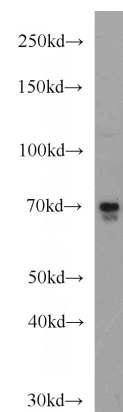
Dilutions

Recommended Dilution:

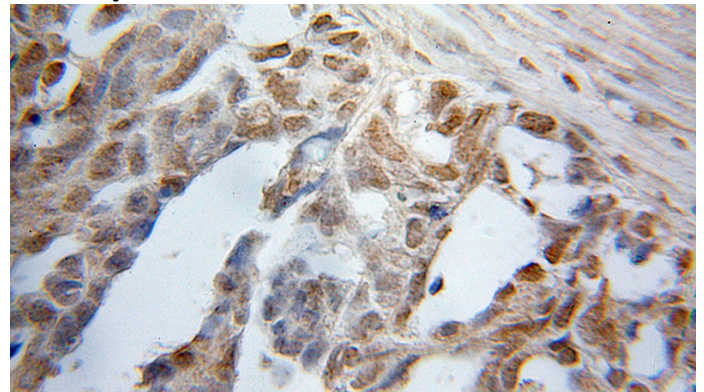
WB: 1:200-1:2000

IHC: 1:20-1:200

Validations



HeLa cells were subjected to SDS PAGE followed by western blot with Catalog No:110280(ELL antibody) at dilution of 1:1000



Immunohistochemical of paraffin-embedded human ovary tumor using Catalog No:110280(ELL antibody) at dilution of 1:50 (under 10x lens)