

EIF4G1 antibody

Catalog Number: 110263

Product name

EIF4G1 antibody

WB: 1:500-1:5000

IP: 1:200-1:2000

Specificity

Human, Mouse, Rat; other species not tested.

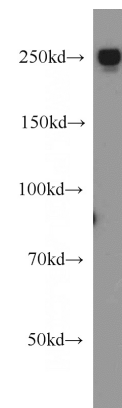
IHC: 1:20-1:200

IF: 1:10-1:100

Antibody description

EIF4G1 Rabbit Polyclonal antibody. Positive WB detected in HeLa cells. Positive IP detected in HeLa cells. Positive IF detected in HeLa cells, Ethacrynic acid treated HepG2 cells, HepG2 cells. Positive IHC detected in human breast cancer tissue. Observed molecular weight by Western-blot: 250 kDa

Validations



Preparation

This antibody was obtained by immunization of EIF4G1 recombinant protein (Accession Number: BC007788). Purification method: Antigen affinity purified.

HeLa cells were subjected to SDS PAGE followed by western blot with Catalog No:110263(EIF4G1 antibody) at dilution of 1:1000

Formulation

PBS with 0.02% sodium azide and 50% glycerol pH 7.3.

Storage

Store at -20°C. DO NOT ALIQUOT

Clonality

Polyclonal

Ig Type

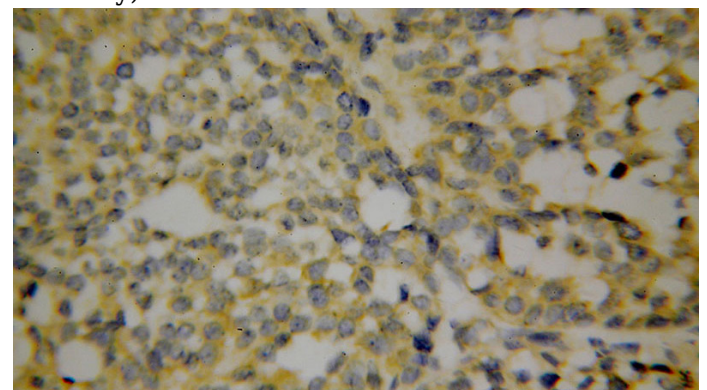
Rabbit IgG

Applications

ELISA, WB, IHC, IF, IP

Dilutions

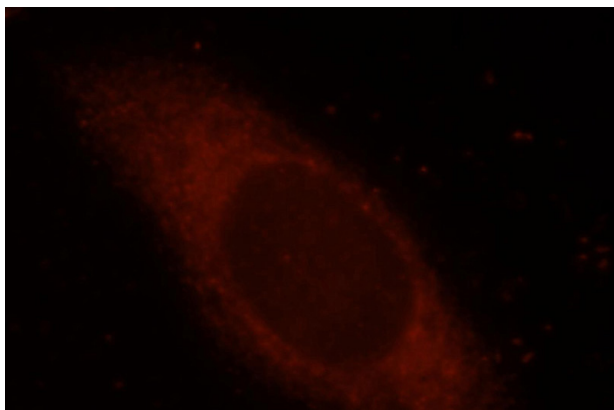
Recommended Dilution:



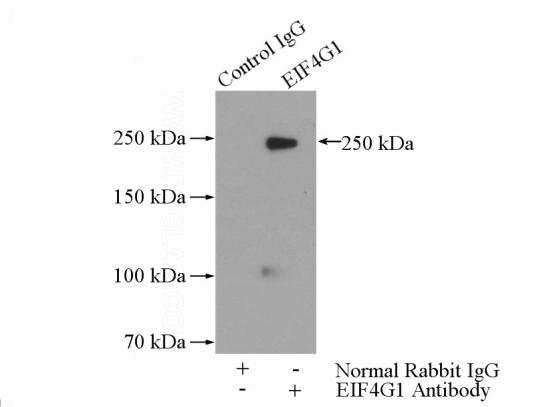
Immunohistochemical of paraffin-embedded human breast cancer using Catalog No:110263(EIF4G1 antibody) at dilution of 1:100 (under 40x lens)

EIF4G1 antibody

Catalog Number: 110263



Immunofluorescent analysis of HeLa cells, using EIF4G1 antibody Catalog No:110263 at 1:25 dilution and Rhodamine-labeled goat anti-rabbit



IgG (red).

IP Result of anti-EIF4G1 (IP:Catalog No:110263, 5ug; Detection:Catalog No:110263 1:500) with HeLa cells lysate 2000ug.