

ENO1 antibody

Catalog Number: 110252

Product name

ENO1 antibody

WB: 1:1000-1:10000

IP: 1:200-1:2000

Specificity

Human, Mouse, Rat; other species not tested.

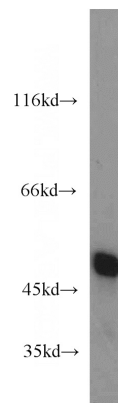
IHC: 1:20-1:200

IF: 1:20-1:200

Antibody description

ENO1 Rabbit Polyclonal antibody. Positive IF detected in HepG2 cells. Positive IHC detected in human brain tissue, human pancreas tissue, human skeletal muscle tissue. Positive IP detected in mouse brain tissue. Positive WB detected in HeLa cells, HepG2 cells, mouse brain tissue, mouse liver tissue. Observed molecular weight by Western-blot: 47 kDa

Validations



Preparation

This antibody was obtained by immunization of Peptide (Accession Number: NM_001428). Purification method: Antigen affinity purified.

HeLa cells were subjected to SDS PAGE followed by western blot with Catalog No:110252(ENO1 antibody) at dilution of 1:2000

Formulation

PBS with 0.02% sodium azide and 50% glycerol pH 7.3.

Storage

Store at -20°C. DO NOT ALIQUOT

Clonality

Polyclonal

Ig Type

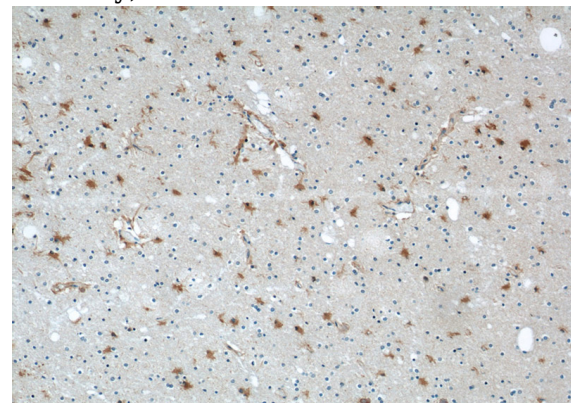
Rabbit IgG

Applications

ELISA, WB, IHC, IF, IP

Dilutions

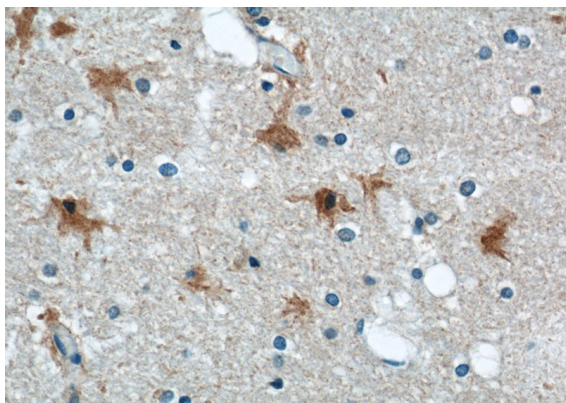
Recommended Dilution:



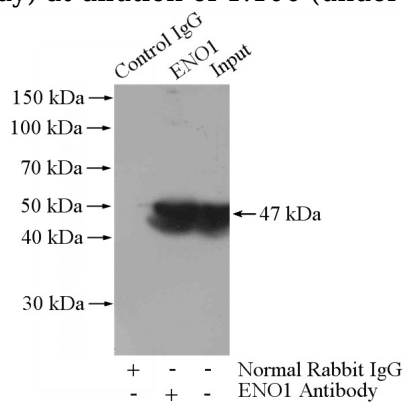
Immunohistochemical of paraffin-embedded human brain using Catalog No:110252(ENO1 antibody) at dilution of 1:100 (under 10x lens)

ENO1 antibody

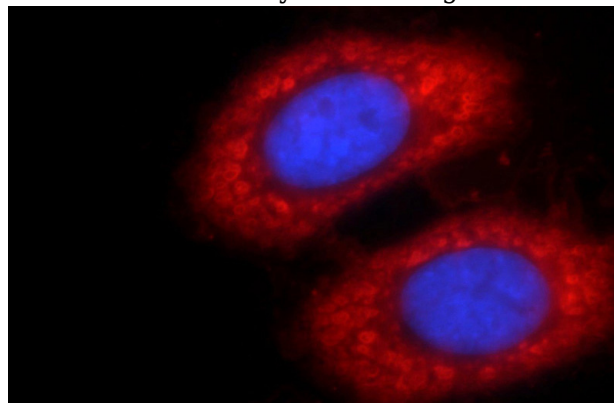
Catalog Number: 110252



Immunohistochemical of paraffin-embedded human brain using Catalog No:110252(ENO1 antibody) at dilution of 1:100 (under 40x lens)



IP Result of anti-ENO1 (IP:Catalog No:110252, 4ug; Detection:Catalog No:110252 1:500) with mouse brain tissue lysate 4000ug.



Immunofluorescent analysis of HepG2 cells using Catalog No:110252(ENO1 Antibody) at dilution of 1:50 and Rhodamine-Goat anti-Rabbit IgG