

# ELP4 antibody



Catalog Number: 110233

## Product name

ELP4 antibody

## Immunogen

[Human ELP4 Recombinant protein \(His tag\)](#)

## Specificity

human, mouse, rat; other species not tested.

## Antibody description

ELP4 Rabbit Polyclonal antibody. Positive IHC detected in human endometrial cancer. Positive WB detected in human cerebellum tissue, human brain tissue. Observed molecular weight by Western-blot: 46kd

## Preparation

This antibody was obtained by immunization of ELP4 recombinant protein (Accession Number: NM\_001288726). Purification method: Antigen affinity purified.

## Formulation

PBS with 0.02% sodium azide and 50% glycerol pH 7.3.

## Storage

Store at -20°C. DO NOT ALIQUOT

## Clonality

Polyclonal

## Ig Type

Rabbit IgG

## Applications

ELISA, WB, IHC

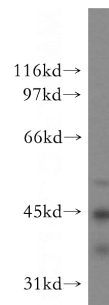
## Dilutions

Recommended Dilution:

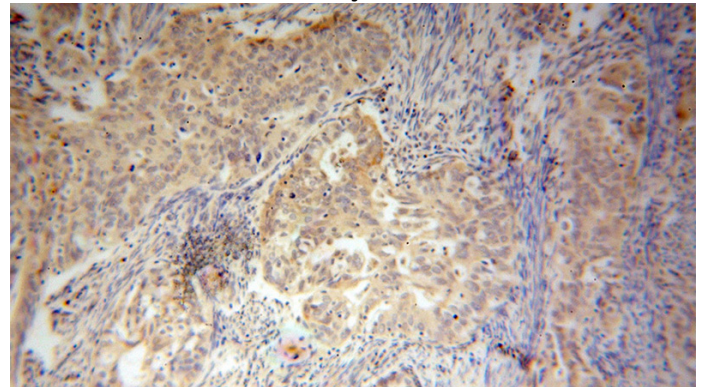
WB: 1:200-1:2000

IHC: 1:20-1:200

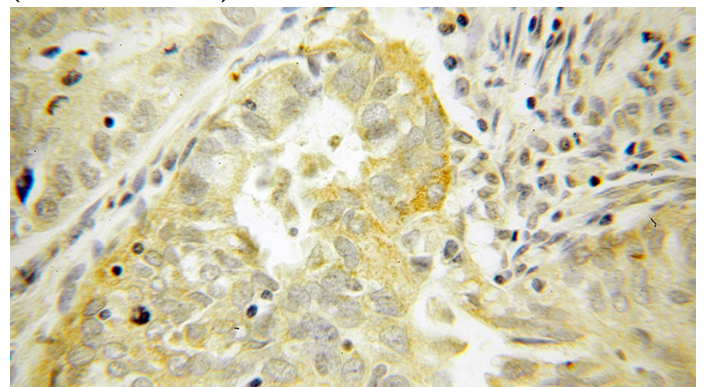
## Validations



human cerebellum tissue were subjected to SDS PAGE followed by western blot with Catalog No:110233(ELP4 antibody) at dilution of 1:300



Immunohistochemical of paraffin-embedded human endometrial cancer using Catalog No:110233(ELP4 antibody) at dilution of 1:50 (under 10x lens)



# ELP4 antibody



Catalog Number: 110233

---

Immunohistochemical of paraffin-embedded human endometrial cancer using Catalog

No:110233(ELP4 antibody) at dilution of 1:50 (under 40x lens)