

# ELOVL4 antibody



Catalog Number: 110231

## Product name

ELOVL4 antibody

## Specificity

Human, Mouse, Rat; other species not tested.

## Antibody description

ELOVL4 Rabbit Polyclonal antibody. Positive IHC detected in human small intestine tissue. Positive IF detected in A431 cells. Positive WB detected in Y79 cells, A431 cells, mouse brain tissue.

Observed molecular weight by Western-blot:  
37-40kd

## Preparation

This antibody was obtained by immunization of Peptide (Accession Number: NM\_022726).  
Purification method: Antigen affinity purified.

## Formulation

PBS with 0.02% sodium azide and 50% glycerol  
pH 7.3.

## Storage

Store at -20°C. DO NOT ALIQUOT

## Clonality

Polyclonal

## Ig Type

Rabbit IgG

## Applications

ELISA, WB, IHC, IF

## Dilutions

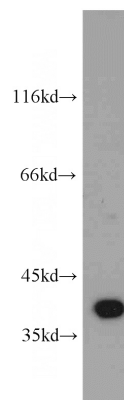
Recommended Dilution:

WB: 1:500-1:5000

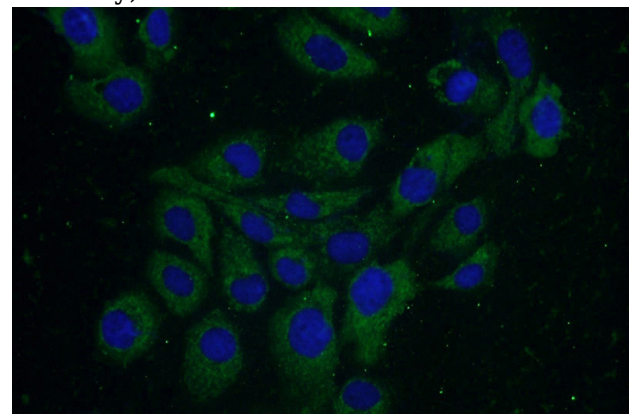
IHC: 1:20-1:200

IF: 1:10-1:100

## Validations



Y79 cells were subjected to SDS PAGE followed by western blot with Catalog No:110231(ELOVL4 antibody) at dilution of 1:500



Immunofluorescent analysis of A431 cells using Catalog No:110231(ELOVL4 Antibody) at dilution of 1:25 and Alexa Fluor 488-conjugated AffiniPure Goat Anti-Rabbit IgG(H+L)