

# EHD2 antibody

Catalog Number: 110224

## Product name

EHD2 antibody

IP: 1:200-1:2000

IHC: 1:20-1:200

## Specificity

Human, Mouse, Rat; other species not tested.

## Antibody description

EHD2 Rabbit Polyclonal antibody. Positive WB detected in human heart tissue. Positive IP detected in mouse heart tissue. Positive IHC detected in human lung cancer tissue. Observed molecular weight by Western-blot: 61 kDa

## Preparation

This antibody was obtained by immunization of EHD2 recombinant protein (Accession Number: NM\_014601). Purification method: Antigen affinity purified.

## Formulation

PBS with 0.1% sodium azide and 50% glycerol pH 7.3.

## Storage

Store at -20°C. DO NOT ALIQUOT

## Clonality

Polyclonal

## Ig Type

Rabbit IgG

## Applications

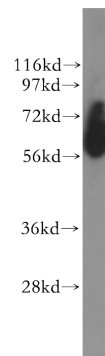
ELISA, WB, IHC, IP

## Dilutions

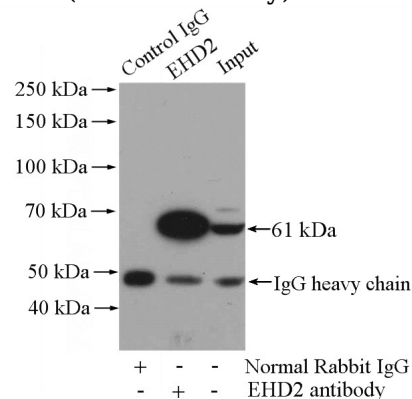
Recommended Dilution:

WB: 1:500-1:5000

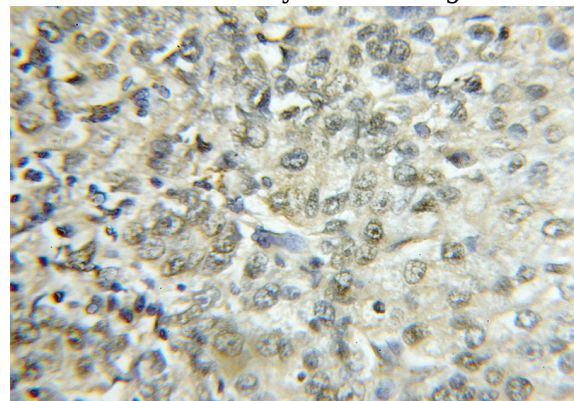
## Validations



human heart tissue were subjected to SDS PAGE followed by western blot with Catalog No:110224(EHD2 antibody) at dilution of 1:400



IP Result of anti-EHD2 (IP:Catalog No:110224, 4ug; Detection:Catalog No:110224 1:800) with mouse heart tissue lysate 4000ug.



Immunohistochemical of paraffin-embedded human lung cancer using Catalog

# EHD2 antibody



Catalog Number: 110224

---

No:110224(EHD2 antibody) at dilution of 1:50 (under 10x lens)