

EGFR (C-terminal) antibody



Catalog Number: 110216

Product name

EGFR (C-terminal) antibody

IP: 1:200-1:2000

IHC: 1:20-1:200

Specificity

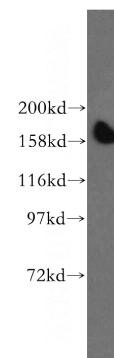
Human; other species not tested.

IF: 1:10-1:100

Antibody description

EGFR (C-terminal) Rabbit Polyclonal antibody. Positive IP detected in A431 cells. Positive WB detected in A431 cells, HeLa cells. Positive IF detected in HeLa cells. Positive IHC detected in human skin cancer tissue. Observed molecular weight by Western-blot: 170 kDa

Validations



Preparation

This antibody was obtained by immunization of Peptide (Accession Number: NM_001346897). Purification method: Antigen affinity purified.

A431 cells were subjected to SDS PAGE followed by western blot with Catalog No:110216(EGFR antibody) at dilution of 1:800

Formulation

PBS with 0.02% sodium azide and 50% glycerol pH 7.3.

Storage

Store at -20°C. DO NOT ALIQUOT

Clonality

Polyclonal

Ig Type

Rabbit IgG

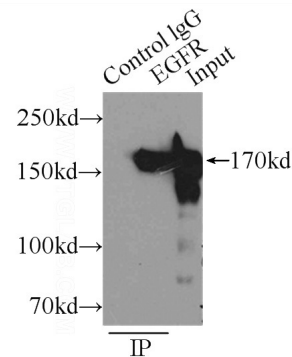
Applications

ELISA, WB, IHC, IP, IF

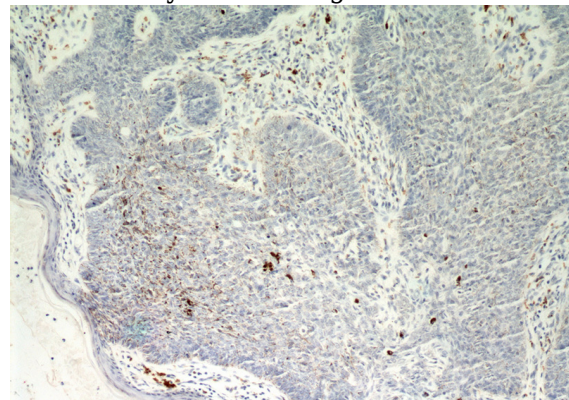
Dilutions

Recommended Dilution:

WB: 1:200-1:2000



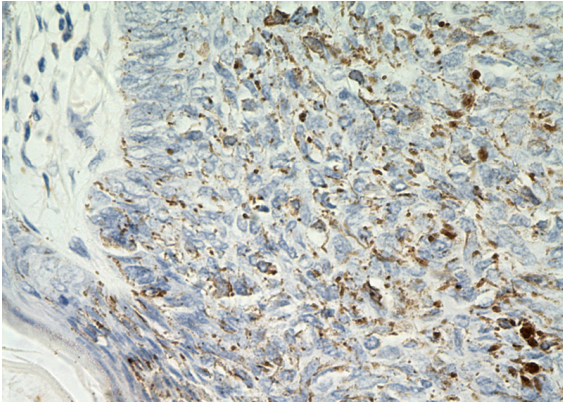
IP Result of anti-EGFR (IP:Catalog No:110216, 5ug; Detection:Catalog No:110216 1:500) with A431 cells lysate 3000ug.



EGFR (C-terminal) antibody

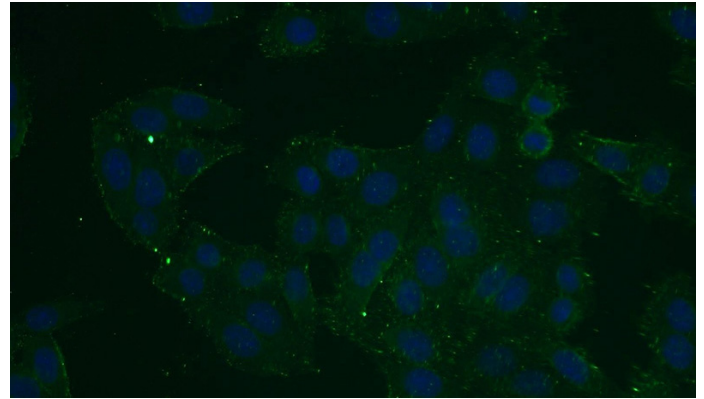
Catalog Number: 110216

Immunohistochemical of paraffin-embedded human skin cancer using Catalog No:110216(EGFR antibody) at dilution of 1:50 (under 10x lens)



Immunohistochemical of paraffin-embedded human skin cancer using Catalog

No:110216(EGFR antibody) at dilution of 1:50 (under 40x lens)



Immunofluorescent analysis of HeLa cells using Catalog No:110216(EGFR Antibody) at dilution of 1:25 and Alexa Fluor 488-conjugated AffiniPure Goat Anti-Rabbit IgG(H+L)