

# EGFL7 antibody

Catalog Number: 110215

## Product name

EGFL7 antibody

## Specificity

Human, Mouse, Rat; other species not tested.

## Antibody description

EGFL7 Rabbit Polyclonal antibody. Positive WB detected in human heart tissue. Positive IHC detected in human kidney tissue, human breast cancer tissue, human endometrial cancer tissue, human ovary tumor tissue. Observed molecular weight by Western-blot: 41-45 kDa

## Preparation

This antibody was obtained by immunization of EGFL7 recombinant protein (Accession Number: XM\_011518765). Purification method: Antigen affinity purified.

## Formulation

PBS with 0.02% sodium azide and 50% glycerol pH 7.3.

## Storage

Store at -20°C. DO NOT ALIQUOT

## Clonality

Polyclonal

## Ig Type

Rabbit IgG

## Applications

ELISA, WB, IHC

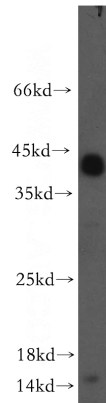
## Dilutions

Recommended Dilution:

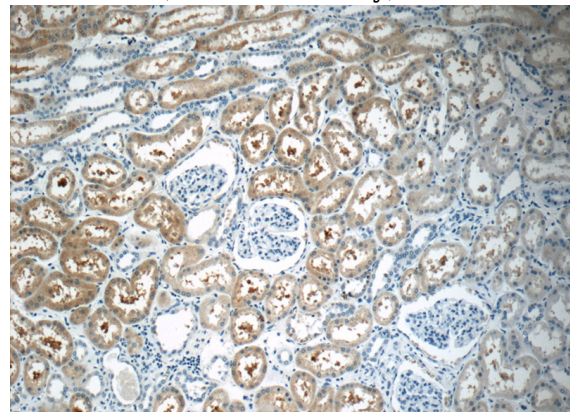
WB: 1:200-1:2000

IHC: 1:20-1:200

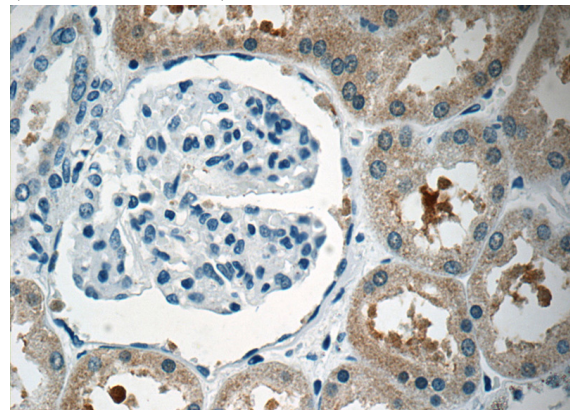
## Validations



human heart tissue were subjected to SDS PAGE followed by western blot with Catalog No:110215(EGFL7 antibody) at dilution of 1:500



Immunohistochemistry of paraffin-embedded human kidney tissue slide using Catalog No:110215(EGFL7 Antibody) at dilution of 1:50 (under 10x lens)



Immunohistochemistry of paraffin-embedded human kidney tissue slide using Catalog

# EGFL7 antibody



Catalog Number: 110215

---

No:110215(EGFL7 Antibody) at dilution of 1:50 (under 40x lens)