

Eg5 antibody



Catalog Number: 110214

Product name

Eg5 antibody

IP: 1:500-1:5000

IHC: 1:20-1:200

Specificity

Human; other species not tested.

Antibody description

Eg5 Rabbit Polyclonal antibody. Positive IHC detected in human lung cancer tissue, human prostate hyperplasia tissue. Positive IP detected in Raji cells. Positive WB detected in PC-13 cells, HEK-293 cells, MCF7 cells, Raji cells. Observed molecular weight by Western-blot: 120-130 kDa

Preparation

This antibody was obtained by immunization of Eg5 recombinant protein (Accession Number: NM_004523). Purification method: Antigen Affinity purified.

Formulation

PBS with 0.02% sodium azide and 50% glycerol pH 7.3.

Storage

Store at -20°C. DO NOT ALIQUOT

Clonality

Polyclonal

Ig Type

Rabbit IgG

Applications

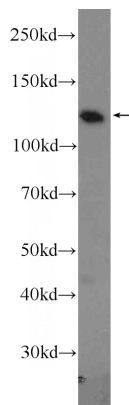
ELISA, WB, IHC, IP

Dilutions

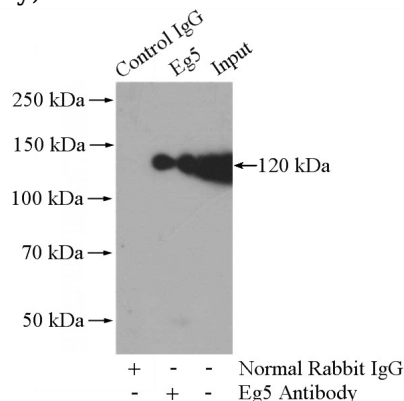
Recommended Dilution:

WB: 1:500-1:5000

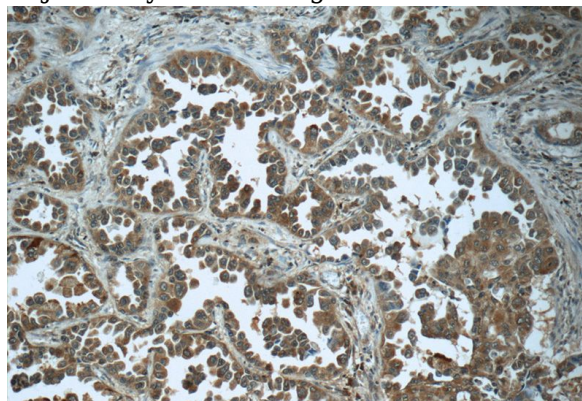
Validations



PC-13 cells were subjected to SDS PAGE followed by western blot with Catalog No:110214(KIF11 Antibody) at dilution of 1:1000



IP Result of anti-KIF11 (IP:Catalog No:110214, 4ug; Detection:Catalog No:110214 1:1000) with Raji cells lysate 2000ug.

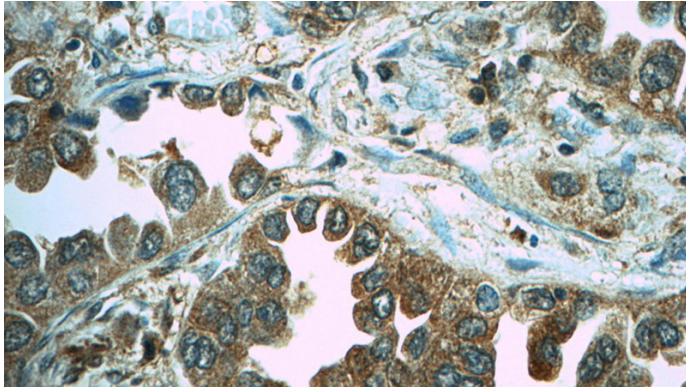


Immunohistochemistry of paraffin-embedded human lung cancer tissue slide using Catalog

Eg5 antibody

Catalog Number: 110214

No:110214(KIF11 Antibody) at dilution of 1:50
(under 10x lens)



Immunohistochemistry of paraffin-embedded
human lung cancer tissue slide using Catalog
No:110214(KIF11 Antibody) at dilution of 1:50
(under 40x lens)