

EFTUD2 antibody

Catalog Number: 110213

Product name

EFTUD2 antibody

IP: 1:500-1:5000

IF: 1:10-1:100

Specificity

Human, Mouse, Rat; other species not tested.

Antibody description

EFTUD2 Rabbit Polyclonal antibody. Positive IF detected in HepG2 cells. Positive WB detected in HeLa cells. Positive IP detected in HeLa cells. Observed molecular weight by Western-blot: 116 kDa

Preparation

This antibody was obtained by immunization of EFTUD2 recombinant protein (Accession Number: NM_001258353). Purification method: Antigen affinity purified.

Formulation

PBS with 0.1% sodium azide and 50% glycerol pH 7.3.

Storage

Store at -20°C. DO NOT ALIQUOT

Clonality

Polyclonal

Ig Type

Rabbit IgG

Applications

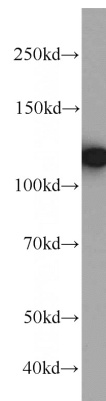
ELISA, WB, IF, IP

Dilutions

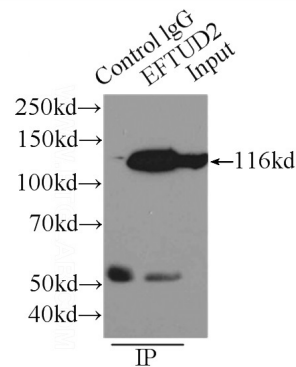
Recommended Dilution:

WB: 1:500-1:5000

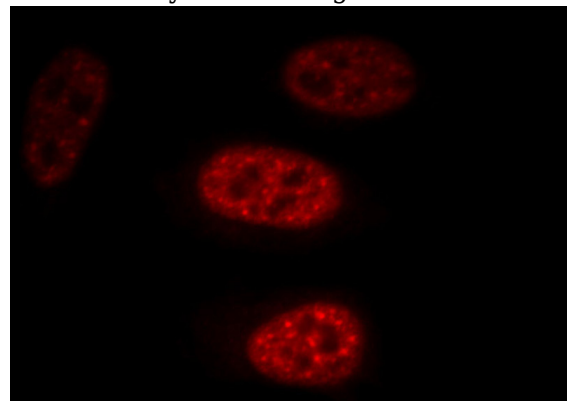
Validations



HeLa cells were subjected to SDS PAGE followed by western blot with Catalog No:110213(EFTUD2 antibody) at dilution of 1:1000



IP Result of anti-EFTUD2 (IP:Catalog No:110213, 3ug; Detection:Catalog No:110213 1:1000) with HeLa cells lysate 4650ug.



Immunofluorescent analysis of HepG2 cells, using EFTUD2 antibody Catalog No:110213 at 1:25

EFTUD2 antibody



Catalog Number: 110213

dilution and Rhodamine-labeled goat anti-rabbit IgG (red).