

# EFTUD1 antibody

Catalog Number: 110212

## Product name

EFTUD1 antibody

## Specificity

Human, Mouse, Rat; other species not tested.

## Antibody description

EFTUD1 Rabbit Polyclonal antibody. Positive WB detected in mouse brain tissue, fetal human brain tissue. Positive IHC detected in human kidney tissue. Observed molecular weight by Western-blot: 125-135 kDa

## Preparation

This antibody was obtained by immunization of EFTUD1 recombinant protein (Accession Number: NM\_001322845). Purification method: Antigen affinity purified.

## Formulation

PBS with 0.1% sodium azide and 50% glycerol pH 7.3.

## Storage

Store at -20°C. DO NOT ALIQUOT

## Clonality

Polyclonal

## Ig Type

Rabbit IgG

## Applications

ELISA, WB, IHC

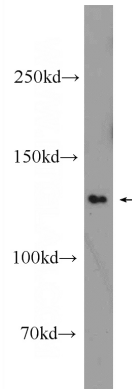
## Dilutions

Recommended Dilution:

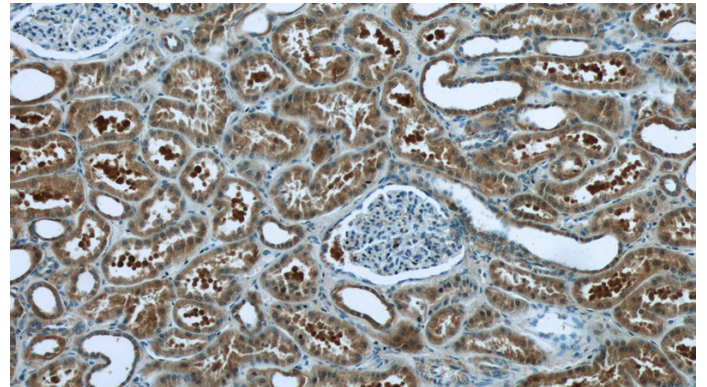
WB: 1:500-1:5000

IHC: 1:20-1:200

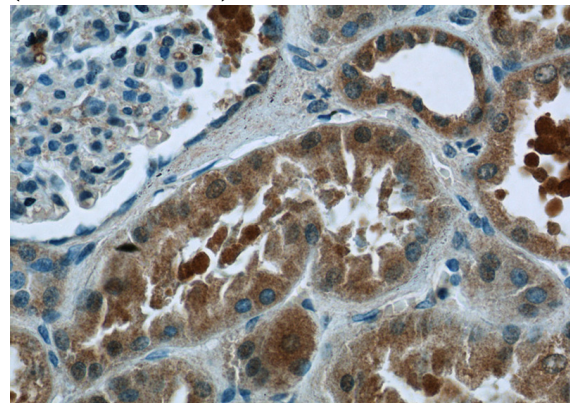
## Validations



mouse brain tissue were subjected to SDS PAGE followed by western blot with Catalog No:110212(EFTUD1 Antibody) at dilution of 1:1000



Immunohistochemistry of paraffin-embedded human kidney tissue slide using Catalog No:110212(EFTUD1 Antibody) at dilution of 1:50 (under 10x lens)



Immunohistochemistry of paraffin-embedded human kidney tissue slide using Catalog

# EFTUD1 antibody



Catalog Number: 110212

---

No:110212(EFTUD1 Antibody) at dilution of 1:50 (under 40x lens)