

# EIF4A2 antibody



Catalog Number: 110201

## Product name

EIF4A2 antibody

IHC: 1:20-1:200

IF: 1:10-1:100

## Specificity

Human, Mouse, Rat; other species not tested.

## Antibody description

EIF4A2 Rabbit Polyclonal antibody. Positive WB detected in MCF7 cells, HepG2 cells. Positive IHC detected in human ovary tumor tissue, human breast cancer tissue. Positive IF detected in HepG2 cells. Observed molecular weight by Western-blot: 46kd

## Preparation

This antibody was obtained by immunization of EIF4A2 recombinant protein (Accession Number: NM\_001967). Purification method: Antigen affinity purified.

## Formulation

PBS with 0.02% sodium azide and 50% glycerol pH 7.3.

## Storage

Store at -20°C. DO NOT ALIQUOT

## Clonality

Polyclonal

## Ig Type

Rabbit IgG

## Applications

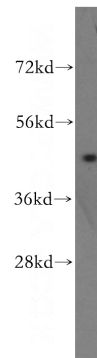
ELISA, WB, IF, IHC

## Dilutions

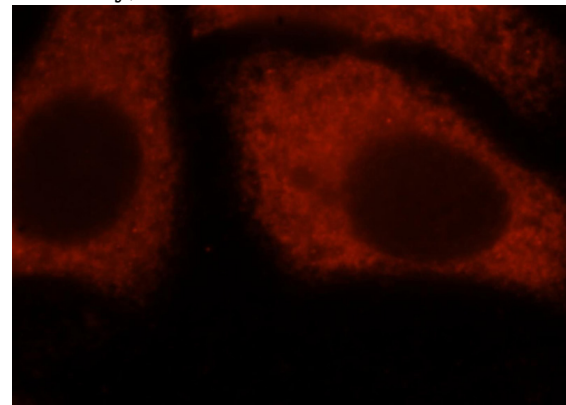
Recommended Dilution:

WB: 1:200-1:2000

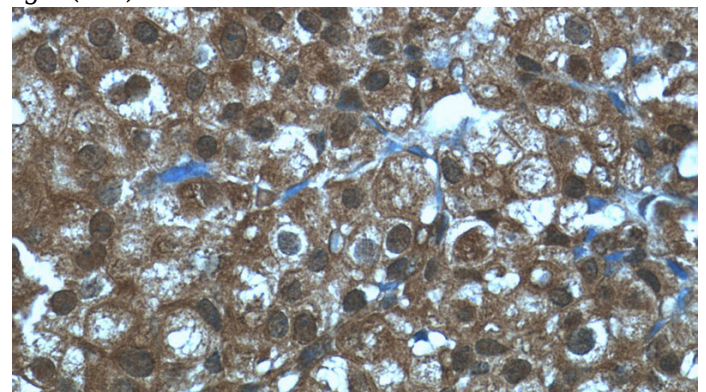
## Validations



MCF7 cells were subjected to SDS PAGE followed by western blot with Catalog No:110201(EIF4A2 antibody) at dilution of 1:500



Immunofluorescent analysis of HepG2 cells, using EIF4A2 antibody Catalog No:110201 at 1:25 dilution and Rhodamine-labeled goat anti-rabbit IgG (red).



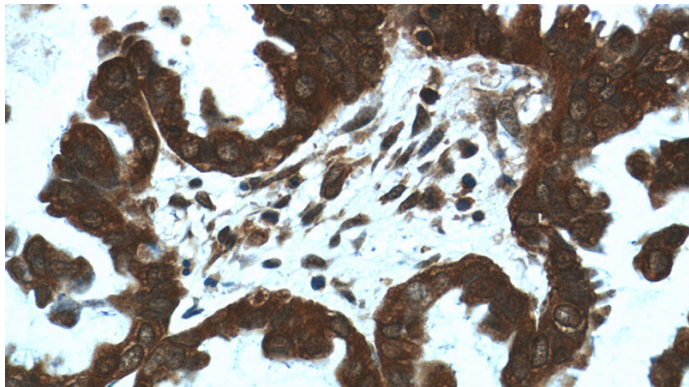
Immunohistochemistry of paraffin-embedded

# EIF4A2 antibody

Catalog Number: 110201

---

human breast cancer tissue slide using Catalog No:110201(EIF4A2 Antibody) at dilution of 1:50 (under 40x lens)



Immunohistochemistry of paraffin-embedded human ovary tumor tissue slide using Catalog No:110201(EIF4A2 Antibody) at dilution of 1:50 (under 40x lens)