

EIF3M antibody



Catalog Number: 110200

Product name

EIF3M antibody

IP: 1:200-1:2000

IHC: 1:20-1:200

Specificity

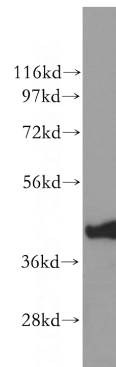
Human, Mouse, Rat; other species not tested.

IF: 1:20-1:200

Antibody description

EIF3M Rabbit Polyclonal antibody. Positive IHC detected in human pancreas cancer tissue. Positive IF detected in HepG2 cells. Positive IP detected in HeLa cells. Positive WB detected in mouse uterus tissue, HeLa cells. Observed molecular weight by Western-blot: 43 kDa

Validations



Preparation

This antibody was obtained by immunization of EIF3M recombinant protein (Accession Number: NM_006360). Purification method: Antigen affinity purified.

mouse uterus tissue were subjected to SDS PAGE followed by western blot with Catalog No:110200(EIF3M antibody) at dilution of 1:500

Formulation

PBS with 0.1% sodium azide and 50% glycerol pH 7.3.

Storage

Store at -20°C. DO NOT ALIQUOT

Clonality

Polyclonal

Ig Type

Rabbit IgG

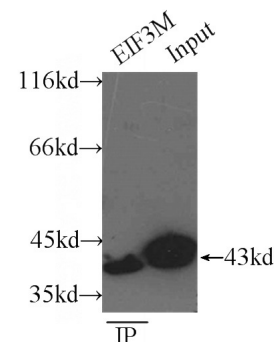
Applications

ELISA, WB, IHC, IF, IP

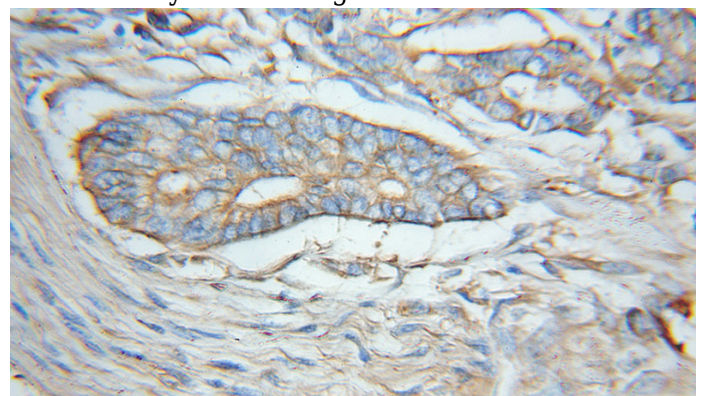
Dilutions

Recommended Dilution:

WB: 1:200-1:2000



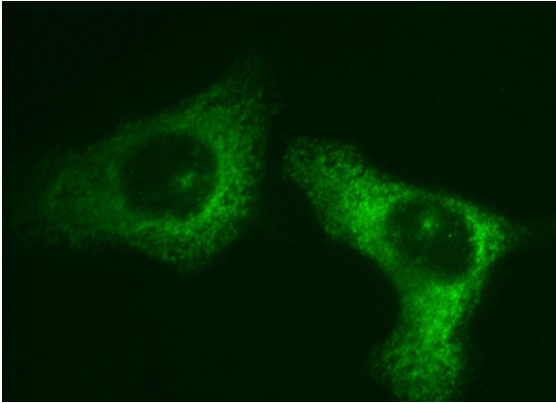
IP Result of anti-EIF3M (IP:Catalog No:110200, 3ug; Detection:Catalog No:110200 1:800) with HeLa cells lysate 3800ug.



EIF3M antibody

Catalog Number: 110200

Immunohistochemical of paraffin-embedded human pancreas cancer using Catalog No:110200(EIF3M antibody) at dilution of 1:50 (under 10x lens)



Immunofluorescent analysis of HepG2 cells, using EIF3M antibody Catalog No:110200 at 1:50 dilution and FITC-labeled donkey anti-rabbit IgG(green).