

# EIF3G antibody



Catalog Number: 110195

## Product name

EIF3G antibody

## Specificity

Human, Mouse, Rat; other species not tested.

## Antibody description

EIF3G Rabbit Polyclonal antibody. Positive IHC detected in human prostate cancer tissue. Positive IF detected in HepG2 cells, A549 cells. Positive WB detected in HepG2 cells. Observed molecular weight by Western-blot: 44kd

## Preparation

This antibody was obtained by immunization of EIF3G recombinant protein (Accession Number: NM\_003755). Purification method: Antigen affinity purified.

## Formulation

PBS with 0.1% sodium azide and 50% glycerol pH 7.3.

## Storage

Store at -20°C. DO NOT ALIQUOT

## Clonality

Polyclonal

## Ig Type

Rabbit IgG

## Applications

ELISA, WB, IHC, IF

## Dilutions

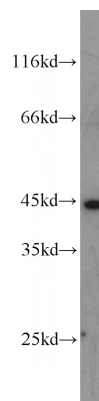
Recommended Dilution:

WB: 1:200-1:2000

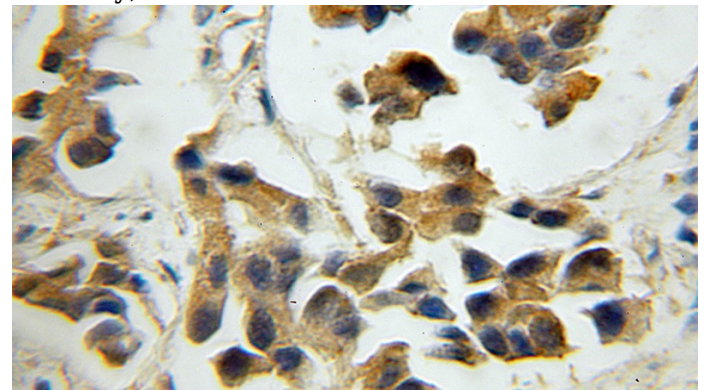
IHC: 1:20-1:200

IF: 1:10-1:100

## Validations



HepG2 cells were subjected to SDS PAGE followed by western blot with Catalog No:110195(EIF3G antibody) at dilution of 1:500



Immunohistochemical of paraffin-embedded human prostate cancer using Catalog No:110195(EIF3G antibody) at dilution of 1:50 (under 10x lens)

Immunofluorescent analysis of HepG2 cells using Catalog No:110195(EIF3G Antibody) at dilution of 1:25 and Alexa Fluor 488-conjugated AffiniPure Goat Anti-Rabbit IgG(H+L)