

EIF3E antibody

Catalog Number: 110193

Product name

EIF3E antibody

WB: 1:200-1:2000

IHC: 1:20-1:200

Specificity

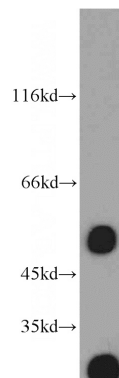
human, mouse, rat; other species not tested.

IF: 1:20-1:200

Antibody description

EIF3E Rabbit Polyclonal antibody. Positive WB detected in rat lymph tissue, A431 cells, HeLa cells, Jurkat cells, mouse pancreas tissue, mouse thymus tissue. Positive IHC detected in human pancreas cancer. Positive IF detected in SH-SY5Y. Observed molecular weight by Western-blot: 48-52kd

Validations



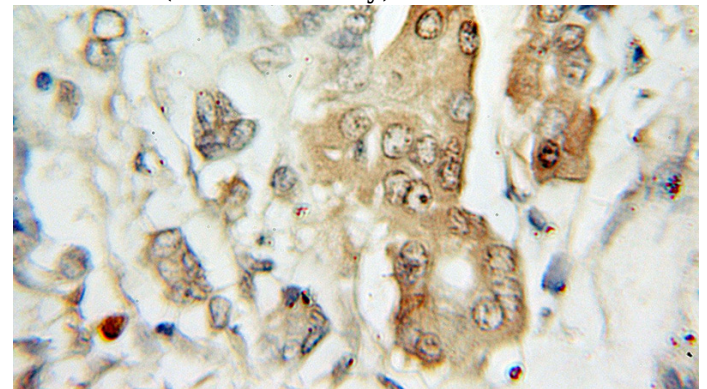
Preparation

This antibody was obtained by immunization of EIF3E recombinant protein (Accession Number: NM_001568). Purification method: Antigen affinity purified.

rat lymph tissue were subjected to SDS PAGE followed by western blot with Catalog No:110193(EIF3E antibody) at dilution of 1:100

Formulation

PBS with 0.1% sodium azide and 50% glycerol pH 7.3.



Storage

Store at -20°C. DO NOT ALIQUOT

Clonality

Polyclonal

Immunohistochemical of paraffin-embedded human pancreas cancer using Catalog No:110193(EIF3E antibody) at dilution of 1:100 (under 10x lens)

Ig Type

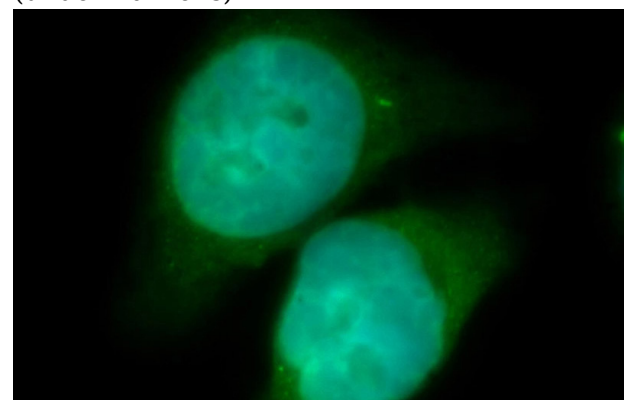
Rabbit IgG

Applications

ELISA, WB, IHC, IF

Dilutions

Recommended Dilution:



EIF3E antibody



Catalog Number: 110193

Immunofluorescent analysis of SH-SY5Y cells, using EIF3E antibody Catalog No:110193 at 1:50 dilution and FITC-labeled donkey anti-rabbit

IgG(green). Blue pseudocolor = DAPI (fluorescent DNA dye).