

EIF2S3 antibody



Catalog Number: 110189

Product name

EIF2S3 antibody

WB: 1:500-1:5000

IP: 1:200-1:2000

Specificity

Human, Mouse; other species not tested.

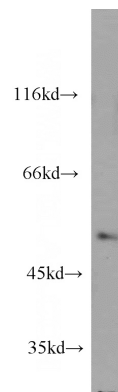
IHC: 1:20-1:200

IF: 1:50-1:500

Antibody description

EIF2S3 Rabbit Polyclonal antibody. Positive IHC detected in human lung cancer tissue, human tonsillitis tissue. Positive IF detected in HeLa cells. Positive IP detected in HeLa cells. Positive WB detected in HeLa cells, COLO 320 cells, mouse thymus tissue. Observed molecular weight by Western-blot: 52 kDa

Validations



Preparation

This antibody was obtained by immunization of EIF2S3 recombinant protein (Accession Number: NM_001415). Purification method: Antigen affinity purified.

HeLa cells were subjected to SDS PAGE followed by western blot with Catalog No:110189(EIF2S3 antibody) at dilution of 1:1000

Formulation

PBS with 0.1% sodium azide and 50% glycerol pH 7.3.

Storage

Store at -20°C. DO NOT ALIQUOT

Clonality

Polyclonal

Ig Type

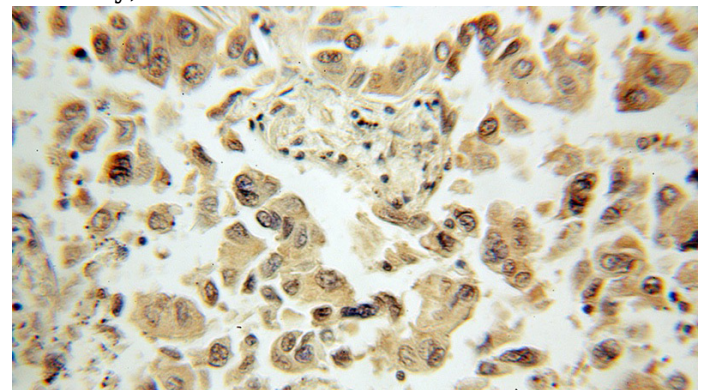
Rabbit IgG

Applications

ELISA, WB, IHC, IP, IF

Dilutions

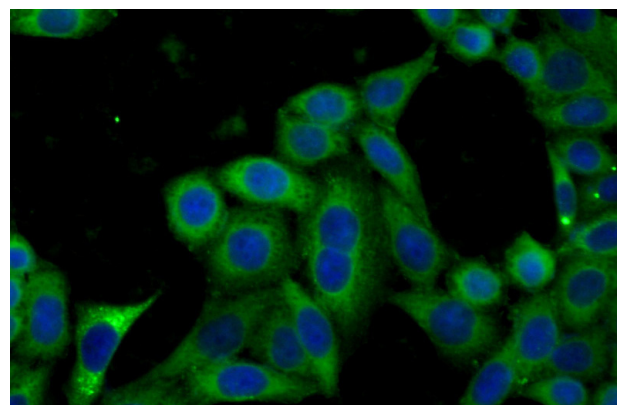
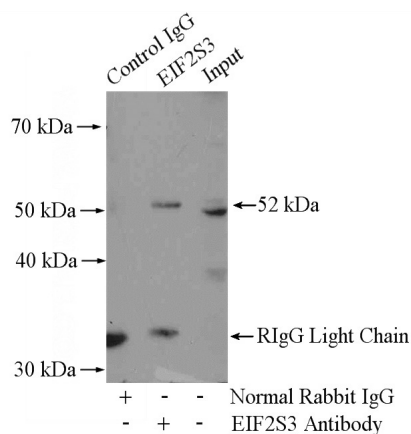
Recommended Dilution:



Immunohistochemical of paraffin-embedded human lung cancer using Catalog No:110189(EIF2S3 antibody) at dilution of 1:50 (under 10x lens)

EIF2S3 antibody

Catalog Number: 110189



Immunofluorescent analysis of (-20oc Ethanol) fixed HeLa cells using Catalog No:110189(EIF2S3 Antibody) at dilution of 1:50 and Alexa Fluor 488-conjugated AffiniPure Goat Anti-Rabbit IgG(H+L)

IP Result of anti-EIF2S3 (IP:Catalog No:110189, 4ug; Detection:Catalog No:110189 1:500) with HeLa cells lysate 2800ug.