

EIF2S2 antibody

Catalog Number: 110188

Product name

EIF2S2 antibody

Recommended Dilution:

WB: 1:500-1:5000

Specificity

Human, Mouse; other species not tested.

IP: 1:500-1:5000

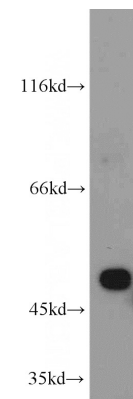
IHC: 1:20-1:200

Antibody description

EIF2S2 Rabbit Polyclonal antibody. Positive IF detected in HepG2 cells, L02 cells. Positive IHC detected in human testis tissue, human liver tissue. Positive IP detected in mouse liver tissue. Positive WB detected in mouse liver tissue, HeLa cells, L02 cells, mouse testis tissue, PC-3 cells. Observed molecular weight by Western-blot: 50 kDa

IF: 1:10-1:100

Validations



Preparation

This antibody was obtained by immunization of EIF2S2 recombinant protein (Accession Number: NM_003908). Purification method: Antigen affinity purified.

mouse liver tissue were subjected to SDS PAGE followed by western blot with Catalog No:110188(EIF2S2 antibody) at dilution of 1:1000

Formulation

PBS with 0.1% sodium azide and 50% glycerol pH 7.3.

Storage

Store at -20°C. DO NOT ALIQUOT

Clonality

Polyclonal

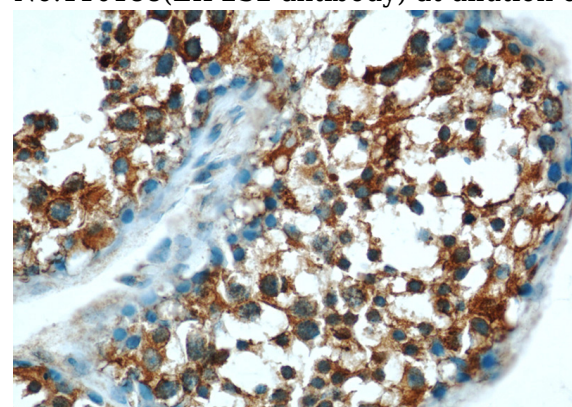
Ig Type

Rabbit IgG

Applications

ELISA, WB, IHC, IF, IP

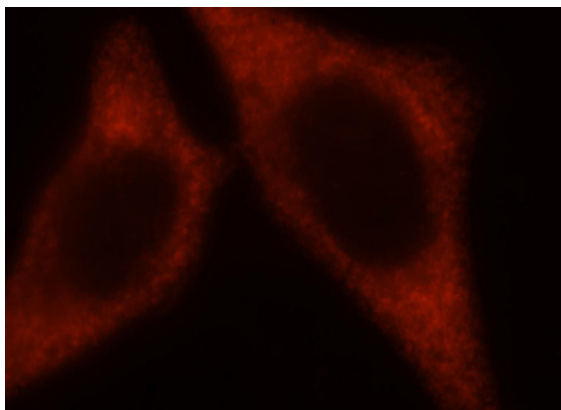
Dilutions



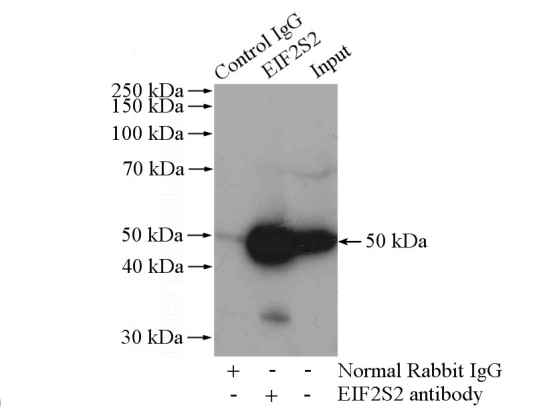
Immunohistochemical of paraffin-embedded human testis using Catalog No:110188(EIF2S2 antibody) at dilution of 1:50 (under 40x lens)

EIF2S2 antibody

Catalog Number: 110188



Immunofluorescent analysis of HepG2 cells, using EIF2S2 antibody Catalog No:110188 at 1:25 dilution and Rhodamine-labeled goat anti-rabbit



IgG (red).

IP Result of anti-EIF2S2 (IP:Catalog No:110188, 4ug; Detection:Catalog No:110188 1:1000) with mouse liver tissue lysate 4000ug.