

EIF2C1-Specific antibody



Catalog Number: 110185

Product name

EIF2C1-Specific antibody

IHC: 1:20-1:200

IF: 1:10-1:100

Specificity

Human, Mouse, Rat; other species not tested.

Antibody description

EIF2C1-Specific Rabbit Polyclonal antibody. Positive WB detected in HeLa cells, HEK-293 cells, Jurkat cells, K-562 cells, NIH/3T3 cells. Positive IF detected in HepG2 cells. Positive IHC detected in human cervical cancer tissue. Observed molecular weight by Western-blot: 97 kDa

Preparation

This antibody was obtained by immunization of Peptide (Accession Number: NM_012199). Purification method: Antigen affinity purified.

Formulation

PBS with 0.1% sodium azide and 50% glycerol pH 7.3.

Storage

Store at -20°C. DO NOT ALIQUOT

Clonality

Polyclonal

Ig Type

Rabbit IgG

Applications

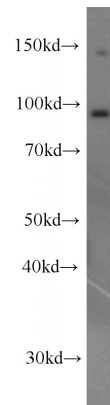
ELISA, WB, IHC, IF

Dilutions

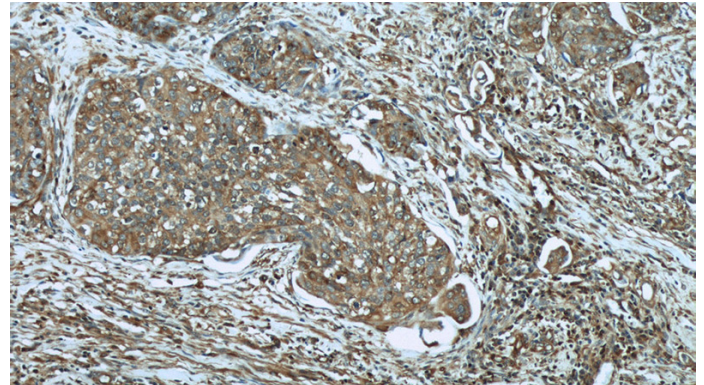
Recommended Dilution:

WB: 1:500-1:5000

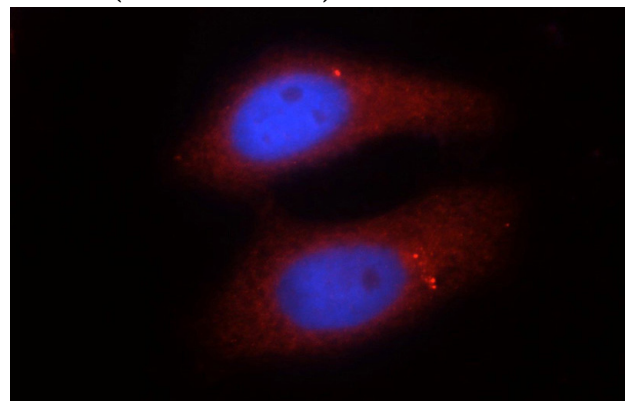
Validations



HeLa cells were subjected to SDS PAGE followed by western blot with Catalog No:110185(EIF2C1-Specific antibody) at dilution of 1:1000



Immunohistochemical of paraffin-embedded human cervical cancer using Catalog No:110185(EIF2C1-Specific antibody) at dilution of 1:50 (under 10x lens)



Immunofluorescent analysis of HepG2 cells using

EIF2C1-Specific antibody



Catalog Number: 110185

Catalog No:110185(EIF2C1-Specific Antibody) at dilution of 1:25 and Rhodamine-Goat anti-Rabbit IgG