

# EIF2B2 antibody

Catalog Number: 110182

## Product name

EIF2B2 antibody

## Specificity

Human, Mouse, Rat; other species not tested.

## Antibody description

EIF2B2 Rabbit Polyclonal antibody. Positive WB detected in K-562 cells, A431 cells, HEK-293 cells, mouse liver tissue. Positive IHC detected in human ovary tissue, human colon cancer tissue. Observed molecular weight by Western-blot: 39 kDa

## Preparation

This antibody was obtained by immunization of EIF2B2 recombinant protein (Accession Number: NM\_014239). Purification method: Antigen affinity purified.

## Formulation

PBS with 0.1% sodium azide and 50% glycerol pH 7.3.

## Storage

Store at -20°C. DO NOT ALIQUOT

## Clonality

Polyclonal

## Ig Type

Rabbit IgG

## Applications

ELISA, IHC, WB

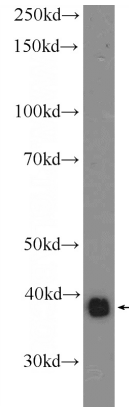
## Dilutions

Recommended Dilution:

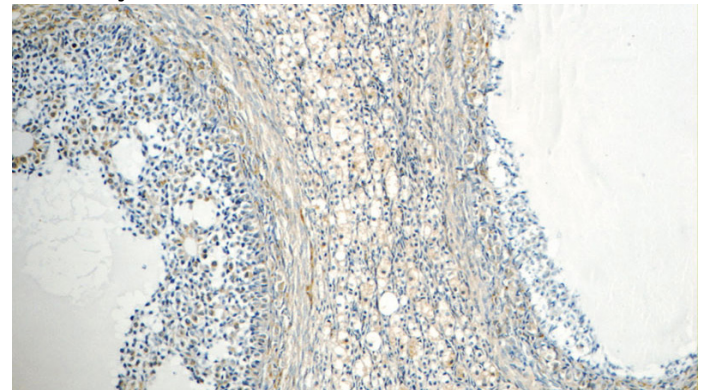
WB: 1:500-1:5000

IHC: 1:20-1:200

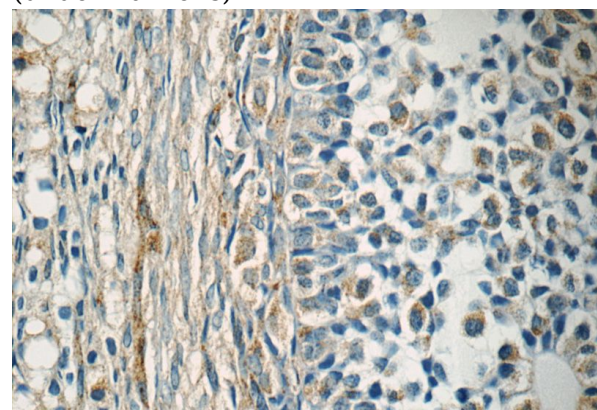
## Validations



K-562 cells were subjected to SDS PAGE followed by western blot with Catalog No:110182(EIF2B2 Antibody) at dilution of 1:1000



Immunohistochemistry of paraffin-embedded human ovary tissue slide using Catalog No:110182(EIF2B2 Antibody) at dilution of 1:50 (under 10x lens)



Immunohistochemistry of paraffin-embedded human ovary tissue slide using Catalog No:110182(EIF2B2 Antibody) at dilution of 1:50

# EIF2B2 antibody



Catalog Number: 110182

---

(under 40x lens)