

EAAT2 antibody

Catalog Number: 110158

Product name

EAAT2 antibody

IP: 1:500-1:5000

IHC: 1:20-1:200

Specificity

Human, Mouse, Rat; other species not tested.

Antibody description

EAAT2 Rabbit Polyclonal antibody. Positive IP detected in mouse brain tissue. Positive WB detected in mouse brain tissue, rat brain tissue. Positive IHC detected in human brain tissue. Observed molecular weight by Western-blot: 60-70 kDa, 140 kDa

Preparation

This antibody was obtained by immunization of EAAT2 recombinant protein (Accession Number: NM_004171). Purification method: Antigen Affinity purified.

Formulation

PBS with 0.02% sodium azide and 50% glycerol pH 7.3.

Storage

Store at -20°C. DO NOT ALIQUOT

Clonality

Polyclonal

Ig Type

Rabbit IgG

Applications

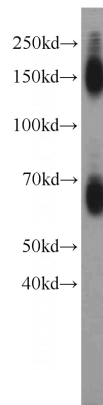
ELISA, WB, IHC, IP

Dilutions

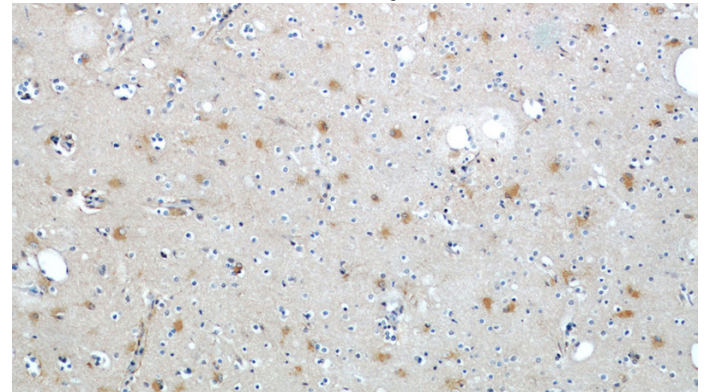
Recommended Dilution:

WB: 1:500-1:5000

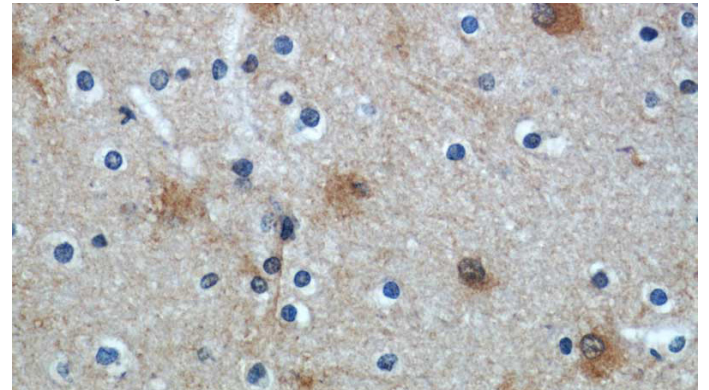
Validations



mouse brain tissue were subjected to SDS PAGE followed by western blot with Catalog No:110158(SLC1A2 antibody) at dilution of 1:1000



Immunohistochemical of paraffin-embedded human brain using Catalog No:110158(SLC1A2 antibody) at dilution of 1:50 (under 10x lens)

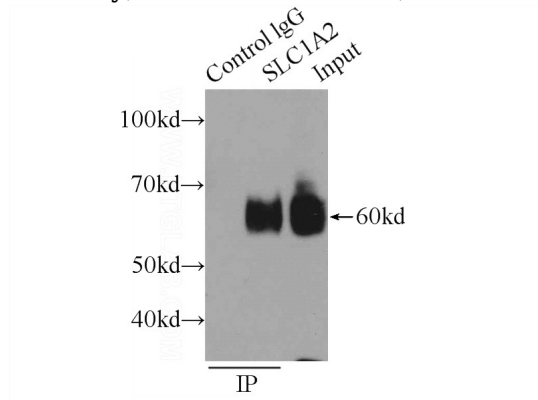


Immunohistochemical of paraffin-embedded human brain using Catalog No:110158(SLC1A2

EAAT2 antibody

Catalog Number: 110158

antibody) at dilution of 1:50 (under 40x lens)



IP Result of anti-SLC1A2 (IP:Catalog No:110158, 3ug; Detection:Catalog No:110158 1:1000) with mouse brain tissue lysate 6000ug.