

Dystrophin antibody



Catalog Number: 110149

Product name

Dystrophin antibody

Recommended Dilution:

WB: 1:500-1:5000

Specificity

Human, Mouse, Rat; other species not tested.

IP: 1:500-1:5000

IHC: 1:20-1:200

Antibody description

Dystrophin Rabbit Polyclonal antibody. Positive IP detected in mouse brain tissue. Positive WB detected in mouse brain tissue, human testis tissue, mouse lung tissue. Positive IHC detected in human skeletal muscle tissue, human heart tissue. Positive IF detected in mouse skeletal muscle tissue. Observed molecular weight by Western-blot: 70 kDa

IF: 1:20-1:200

Validations

Preparation

This antibody was obtained by immunization of Dystrophin recombinant protein (Accession Number: NM_004016). Purification method: Antigen affinity purified.

Formulation

PBS with 0.02% sodium azide and 50% glycerol pH 7.3.

Storage

Store at -20°C. DO NOT ALIQUOT

Clonality

Polyclonal

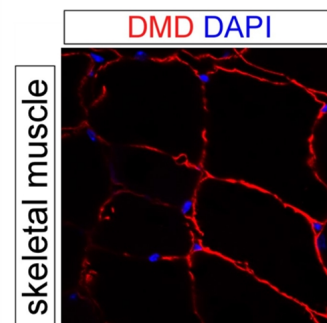
Ig Type

Rabbit IgG

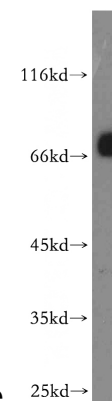
Applications

ELISA, WB, IF, IP, IHC

Dilutions



IF result of anti-DMD (Catalog No:110149, 1:500) with PFA fixed mouse skeletal muscle tissue by

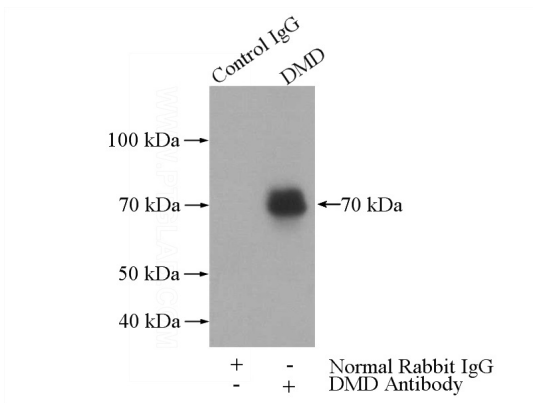


Dr. Daniel Kopinke.

mouse brain tissue were subjected to SDS PAGE followed by western blot with Catalog No:110149(DMD antibody) at dilution of 1:1500

Dystrophin antibody

Catalog Number: 110149



IP Result of anti-DMD (IP:Catalog No:110149, 4ug; Detection:Catalog No:110149 1:1500) with mouse brain tissue lysate 3440ug.



Immunohistochemistry of paraffin-embedded human skeletal muscle tissue slide using Catalog No:110149(DMD Antibody) at dilution of 1:100 (under 10x lens).



Immunohistochemistry of paraffin-embedded human skeletal muscle tissue slide using Catalog No:110149(DMD Antibody) at dilution of 1:100 (under 40x lens).