

# DVL2 antibody



Catalog Number: 110125

## Product name

DVL2 antibody

IP: 1:500-1:5000

IF: 1:20-1:200

## Specificity

Human, Mouse, Rat; other species not tested.

## Antibody description

DVL2 Rabbit Polyclonal antibody. Positive WB detected in NIH/3T3 cells, HepG2 cells, MCF-7 cells, MDA-MB-453s cells, mouse thymus tissue. Positive IP detected in MCF-7 cells. Positive IF detected in HepG2 cells. Observed molecular weight by Western-blot: 90 kDa

## Preparation

This antibody was obtained by immunization of DVL2 recombinant protein (Accession Number: NM\_004422). Purification method: Antigen affinity purified.

## Formulation

PBS with 0.1% sodium azide and 50% glycerol pH 7.3.

## Storage

Store at -20°C. DO NOT ALIQUOT

## Clonality

Polyclonal

## Ig Type

Rabbit IgG

## Applications

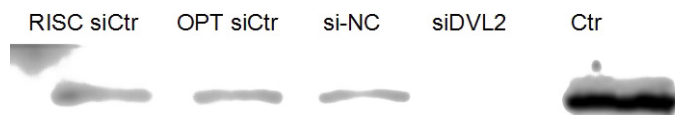
ELISA, WB, IF, IP

## Dilutions

Recommended Dilution:

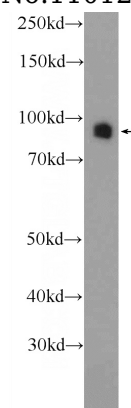
WB: 1:500-1:5000

## Validations



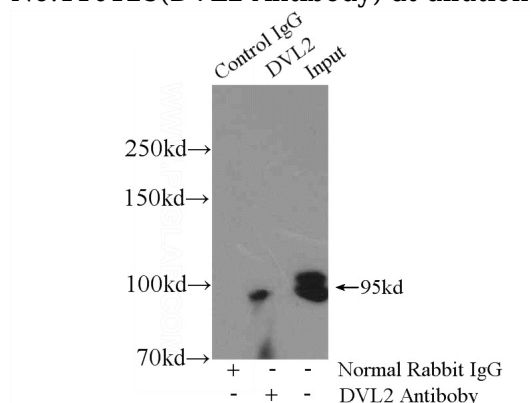
1:1000

WB result of DVL2 antibody (Catalog No:110125,



1:1000) with siDVL2 transfected cells.

NIH/3T3 cells were subjected to SDS PAGE followed by western blot with Catalog No:110125(DVL2 Antibody) at dilution of 1:1000



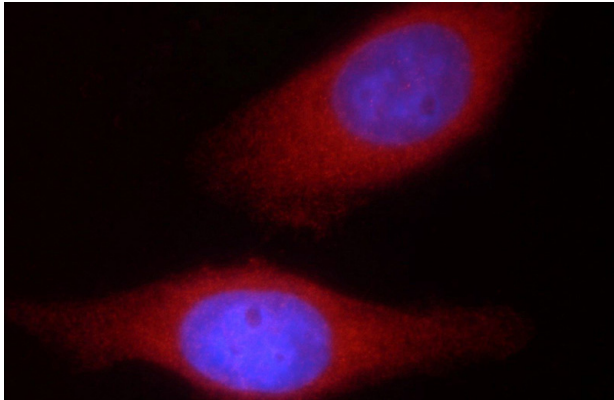
IP Result of anti-DVL2 (IP:Catalog No:110125, 4ug; Detection:Catalog No:110125 1:1000) with MCF-7 cells lysate 3200ug.

# DVL2 antibody



Catalog Number: 110125

---



Immunofluorescent analysis of HepG2 cells using Catalog No:110125(DVL2 Antibody) at dilution of 1:50 and Rhodamine-Goat anti-Rabbit IgG