

# DUSP9 antibody

Catalog Number: 110123

## Product name

DUSP9 antibody

IHC: 1:20-1:200

IF: 1:20-1:200

## Specificity

Human, Mouse, Rat; other species not tested.

## Antibody description

DUSP9 Rabbit Polyclonal antibody. Positive IF detected in HepG2 cells. Positive IHC detected in human kidney tissue. Positive WB detected in human kidney tissue, HeLa cells, human liver tissue. Observed molecular weight by Western-blot: 44kd

## Preparation

This antibody was obtained by immunization of DUSP9 recombinant protein (Accession Number: XM\_011531124). Purification method: Antigen affinity purified.

## Formulation

PBS with 0.02% sodium azide and 50% glycerol pH 7.3.

## Storage

Store at -20°C. DO NOT ALIQUOT

## Clonality

Polyclonal

## Ig Type

Rabbit IgG

## Applications

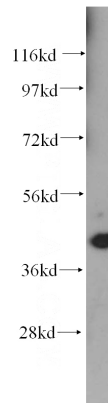
ELISA, WB, IHC, IF

## Dilutions

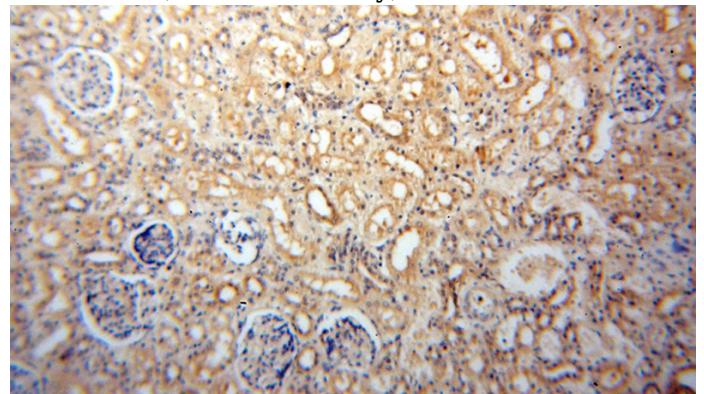
Recommended Dilution:

WB: 1:200-1:2000

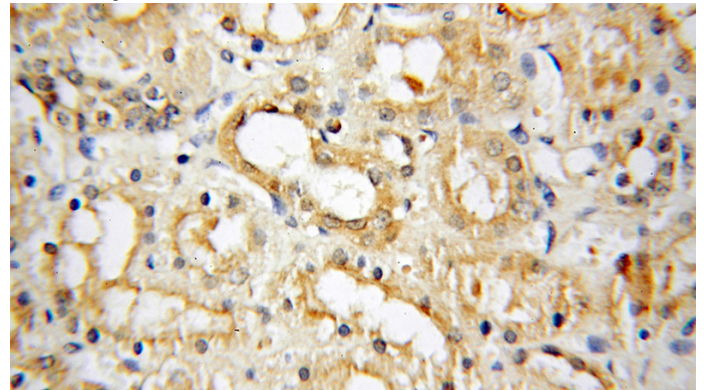
## Validations



human kidney tissue were subjected to SDS PAGE followed by western blot with Catalog No:110123(DUSP9 antibody) at dilution of 1:500



Immunohistochemical of paraffin-embedded human kidney using Catalog No:110123(DUSP9 antibody) at dilution of 1:100 (under 10x lens)



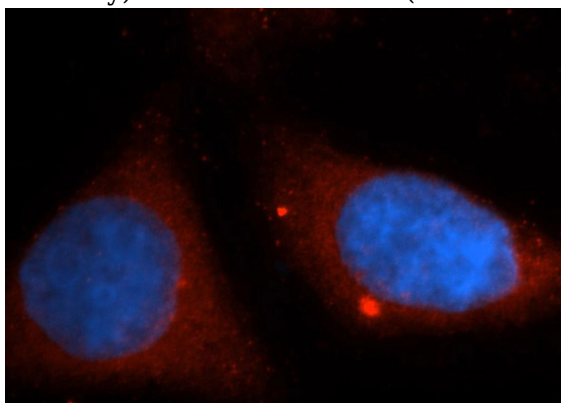
Immunohistochemical of paraffin-embedded human kidney using Catalog No:110123(DUSP9

# DUSP9 antibody

Catalog Number: 110123

---

antibody) at dilution of 1:100 (under 40x lens)



Immunofluorescent analysis of HepG2 cells, using DUSP9 antibody Catalog No:110123 at 1:50 dilution and Rhodamine-labeled goat anti-rabbit IgG (red). Blue pseudocolor = DAPI (fluorescent DNA dye).