

DUSP6 antibody

Catalog Number: 110121

Product name

DUSP6 antibody

IHC: 1:20-1:200

IF: 1:10-1:100

Specificity

Human, Mouse, Rat; other species not tested.

Antibody description

DUSP6 Rabbit Polyclonal antibody. Positive IHC detected in human stomach cancer tissue, human liver cancer tissue, human stomach tissue. Positive IF detected in HeLa cells. Positive WB detected in Transfected HEK-293 cells.

Preparation

This antibody was obtained by immunization of DUSP6 recombinant protein (Accession Number: NM_001946). Purification method: Antigen affinity purified.

Formulation

PBS with 0.1% sodium azide and 50% glycerol pH 7.3.

Storage

Store at -20°C. DO NOT ALIQUOT

Clonality

Polyclonal

Ig Type

Rabbit IgG

Applications

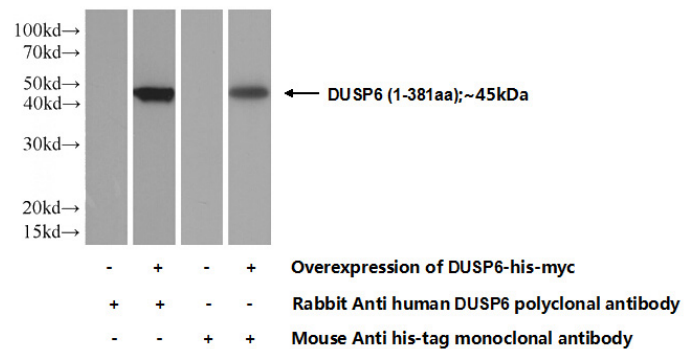
ELISA, IHC, IF, WB

Dilutions

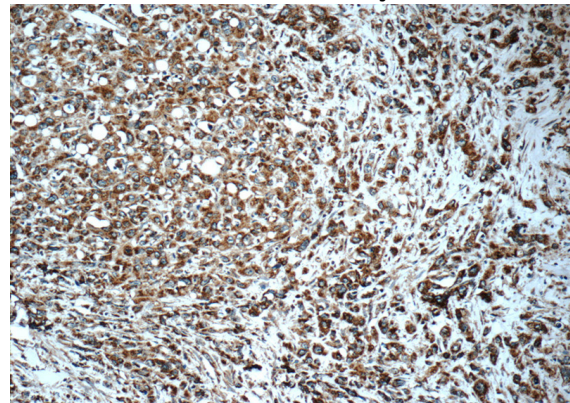
Recommended Dilution:

WB: 1:500-1:5000

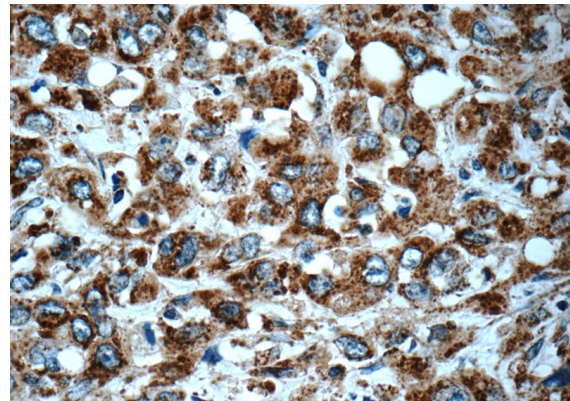
Validations



Transfected HEK-293 cells were subjected to SDS PAGE followed by western blot with Catalog No:110121(DUSP6 Antibody) at dilution of 1:1000



Immunohistochemistry of paraffin-embedded human stomach cancer tissue slide using Catalog No:110121(DUSP6 Antibody) at dilution of 1:100 (under 10x lens)

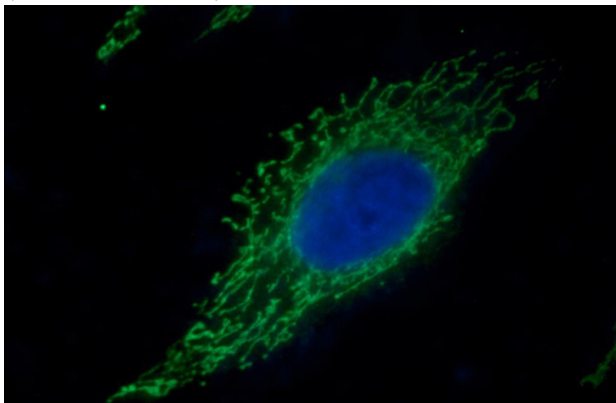


Immunohistochemistry of paraffin-embedded human stomach cancer tissue slide using Catalog

DUSP6 antibody

Catalog Number: 110121

No:110121(DUSP6 Antibody) at dilution of 1:100
(under 40x lens)



Immunofluorescent analysis of HeLa cells using
Catalog No:110121(DUSP6 Antibody) at dilution
of 1:25 and Alexa Fluor 488-conjugated AffiniPure
Goat Anti-Rabbit IgG(H+L)