

# DUSP22 antibody

Catalog Number: 110120

## Product name

DUSP22 antibody

## Specificity

Human; other species not tested.

## Antibody description

DUSP22 Rabbit Polyclonal antibody. Positive WB detected in HEK-293 cells, Transfected HEK-293 cells. Positive IHC detected in human lung cancer tissue. Observed molecular weight by Western-blot: 21kd

## Preparation

This antibody was obtained by immunization of Peptide (Accession Number: NM\_020185). Purification method: Antigen affinity purified.

## Formulation

PBS with 0.1% sodium azide and 50% glycerol pH 7.3.

## Storage

Store at -20°C. DO NOT ALIQUOT

## Clonality

Polyclonal

## Ig Type

Rabbit IgG

## Applications

ELISA, WB, IHC

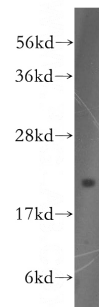
## Dilutions

Recommended Dilution:

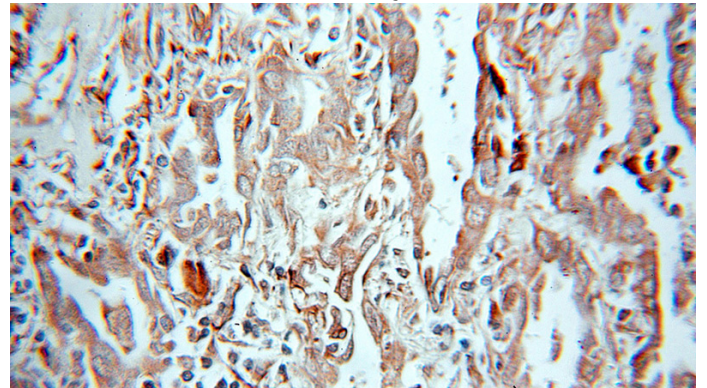
WB: 1:200-1:2000

IHC: 1:10-1:100

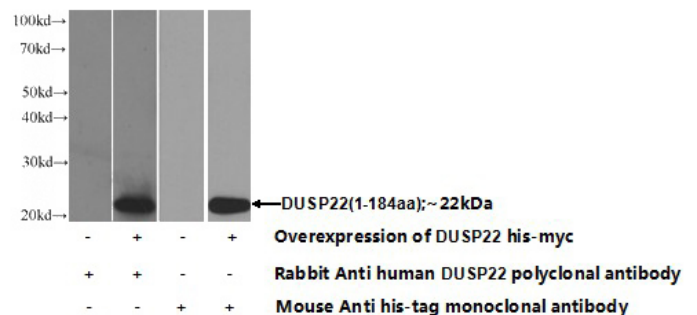
## Validations



HEK-293 cells were subjected to SDS PAGE followed by western blot with Catalog No:110120(DUSP22 antibody) at dilution of 1:400



Immunohistochemical of paraffin-embedded human lung cancer using Catalog No:110120(DUSP22 antibody) at dilution of 1:10 (under 10x lens)



Transfected HEK-293 cells were subjected to SDS PAGE followed by western blot with Catalog No:110120(DUSP22 Antibody) at dilution of 1:1000