

# DUS3L antibody



Catalog Number: 110112

## Product name

DUS3L antibody

## Specificity

human, mouse, rat; other species not tested.

## Antibody description

DUS3L Rabbit Polyclonal antibody. Positive WB detected in MCF7 cells, HeLa cells, Jurkat cells. Positive IHC detected in human breast cancer. Observed molecular weight by Western-blot: 72kd

## Preparation

This antibody was obtained by immunization of DUS3L recombinant protein (Accession Number: NM\_001161619). Purification method: Antigen affinity purified.

## Formulation

PBS with 0.02% sodium azide and 50% glycerol pH 7.3.

## Storage

Store at -20°C. DO NOT ALIQUOT

## Clonality

Polyclonal

## Ig Type

Rabbit IgG

## Applications

ELISA, WB, IHC

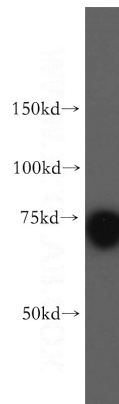
## Dilutions

Recommended Dilution:

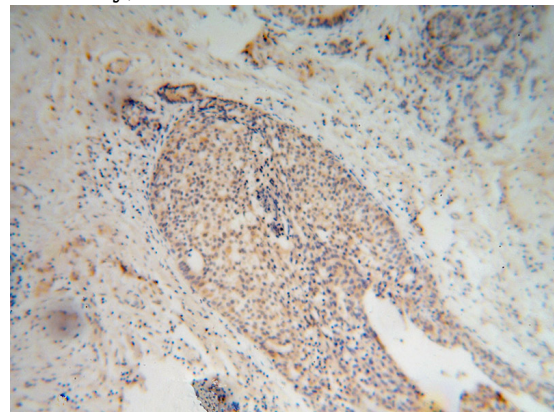
WB: 1:1000-1:10000

IHC: 1:20-1:200

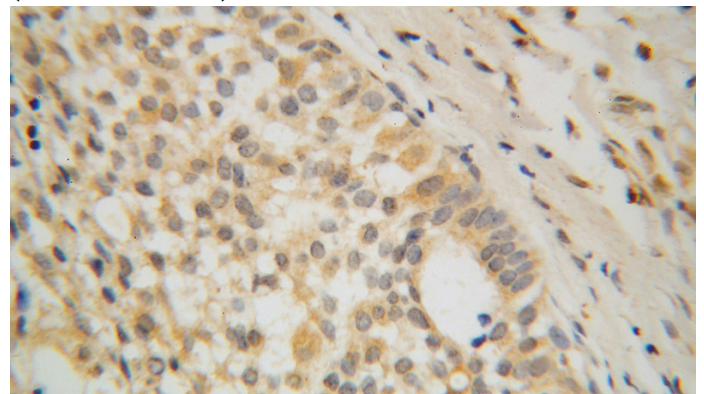
## Validations



MCF7 cells were subjected to SDS PAGE followed by western blot with Catalog No:110112(DUS3L antibody) at dilution of 1:500



Immunohistochemical of paraffin-embedded human breast cancer using Catalog No:110112(DUS3L antibody) at dilution of 1:100 (under 10x lens)



Immunohistochemical of paraffin-embedded human breast cancer using Catalog No:110112(DUS3L antibody) at dilution of 1:100 (under 40x lens)