

# DNA Ligase I antibody



Catalog Number: 110077

## Product name

DNA Ligase I antibody

WB: 1:500-1:5000

IP: 1:200-1:2000

## Specificity

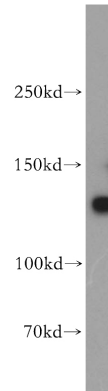
Human, Mouse, Rat; other species not tested.

IHC: 1:20-1:200

## Antibody description

DNA Ligase I Rabbit Polyclonal antibody. Positive IHC detected in human spleen tissue, human brain tissue, human placenta tissue, human testis tissue. Positive WB detected in HepG2 cells, A431 cells, HeLa cells, Jurkat cells. Positive IP detected in HepG2 cells. Observed molecular weight by Western-blot: 130 kDa

## Validations



## Preparation

This antibody was obtained by immunization of DNA Ligase I recombinant protein (Accession Number: NM\_000234). Purification method: Antigen affinity purified.

HepG2 cells were subjected to SDS PAGE followed by western blot with Catalog No:110077(LIG1 antibody) at dilution of 1:500

## Formulation

PBS with 0.02% sodium azide and 50% glycerol pH 7.3.

## Storage

Store at -20°C. DO NOT ALIQUOT

## Clonality

Polyclonal

## Ig Type

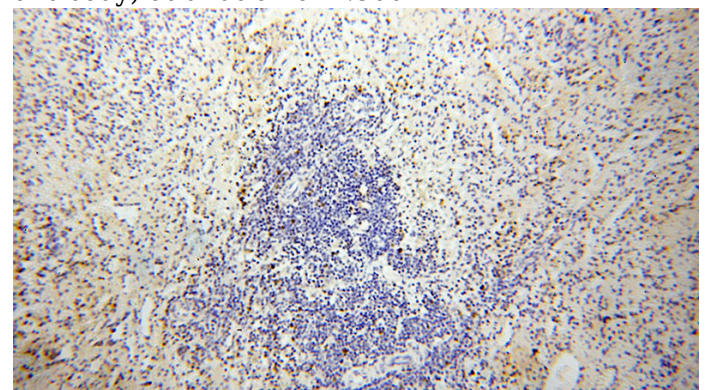
Rabbit IgG

## Applications

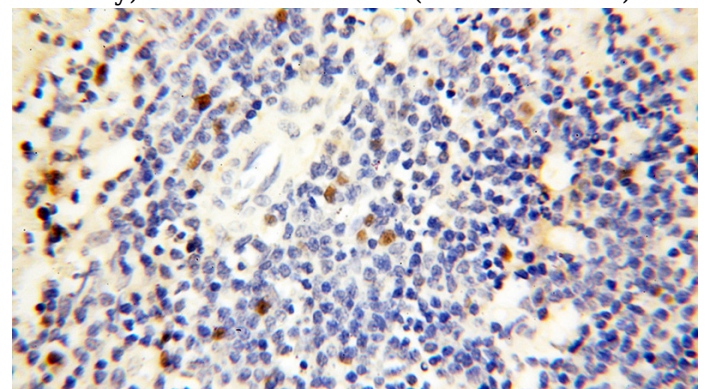
ELISA, WB, IHC, IP

## Dilutions

Recommended Dilution:



Immunohistochemical of paraffin-embedded human spleen using Catalog No:110077(LIG1 antibody) at dilution of 1:100 (under 10x lens)



Immunohistochemical of paraffin-embedded

# DNA Ligase I antibody



Catalog Number: 110077

human spleen using Catalog No:110077(LIG1 antibody) at dilution of 1:100 (under 40x lens)

IP Result of anti-LIG1 (IP:Catalog No:110077, 4ug; Detection:Catalog No:110077 1:500) with HepG2 cells lysate 3200ug.

