

# DPP8 antibody

Catalog Number: 110071

## Product name

DPP8 antibody

IHC: 1:20-1:200

IF: 1:10-1:100

## Specificity

Human, Mouse, Rat; other species not tested.

## Antibody description

DPP8 Rabbit Polyclonal antibody. Positive WB detected in PC-3 cells, human placenta tissue, mouse testis tissue. Positive IHC detected in human prostate cancer tissue. Positive IF detected in PC-3 cells. Observed molecular weight by Western-blot: 75-83kd

## Preparation

This antibody was obtained by immunization of DPP8 recombinant protein (Accession Number: NM\_197961). Purification method: Antigen affinity purified.

## Formulation

PBS with 0.02% sodium azide and 50% glycerol pH 7.3.

## Storage

Store at -20°C. DO NOT ALIQUOT

## Clonality

Polyclonal

## Ig Type

Rabbit IgG

## Applications

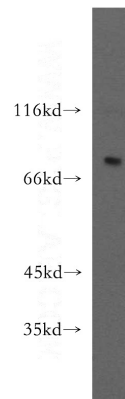
ELISA, WB, IHC, IF

## Dilutions

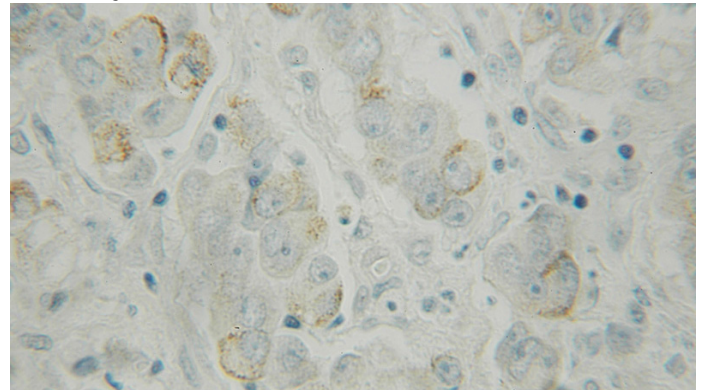
Recommended Dilution:

WB: 1:200-1:2000

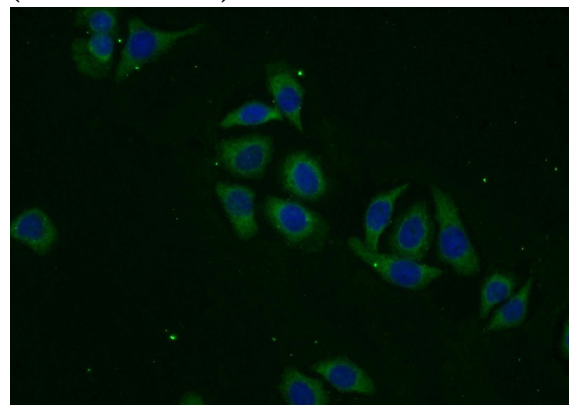
## Validations



PC-3 cells were subjected to SDS PAGE followed by western blot with Catalog No:110071(DPP8 antibody) at dilution of 1:300



Immunohistochemical of paraffin-embedded human prostate cancer using Catalog No:110071(DPP8 antibody) at dilution of 1:100 (under 10x lens)



Immunofluorescent analysis of PC-3 cells using

# DPP8 antibody



Catalog Number: 110071

---

Catalog No:110071(DPP8 Antibody) at dilution of 1:25 and Alexa Fluor 488-conjugated AffiniPure Goat Anti-Rabbit IgG(H+L)