

# DPF2 antibody

Catalog Number: 110064

## Product name

DPF2 antibody

WB: 1:200-1:2000

IP: 1:200-1:2000

## Specificity

Human, Mouse, Rat; other species not tested.

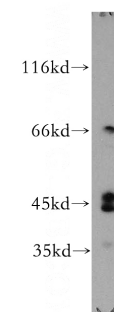
IHC: 1:20-1:200

IF: 1:10-1:100

## Antibody description

DPF2 Rabbit Polyclonal antibody. Positive IP detected in Jurkat cells. Positive WB detected in Apoptosised HeLa cells, Jurkat cells, K-562 cells, Y79 cells. Positive IHC detected in human lung cancer tissue, human testis tissue. Positive IF detected in HepG2 cells, Hela cells. Observed molecular weight by Western-blot: 44-50 kDa

## Validations



## Preparation

This antibody was obtained by immunization of DPF2 recombinant protein (Accession Number: NM\_006268). Purification method: Antigen affinity purified.

Apoptosised HeLa cells were subjected to SDS PAGE followed by western blot with Catalog No:110064(DPF2 antibody) at dilution of 1:300

## Formulation

PBS with 0.02% sodium azide and 50% glycerol pH 7.3.

## Storage

Store at -20°C. DO NOT ALIQUOT

## Clonality

Polyclonal

## Ig Type

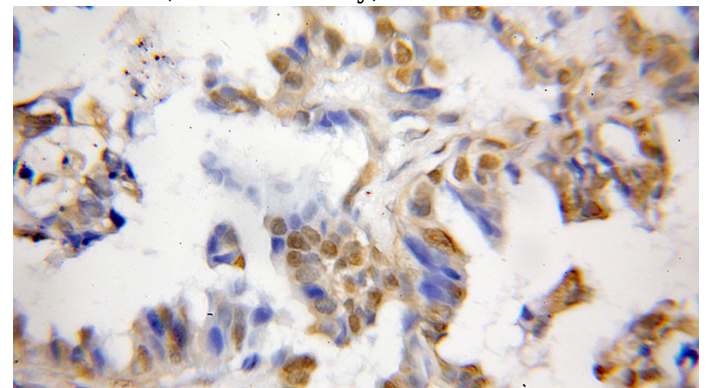
Rabbit IgG

## Applications

ELISA, WB, IHC, IF, IP

## Dilutions

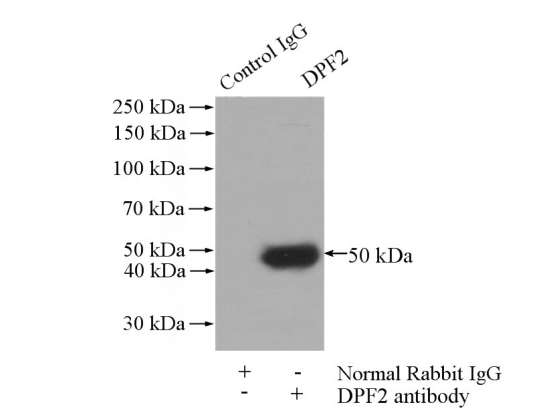
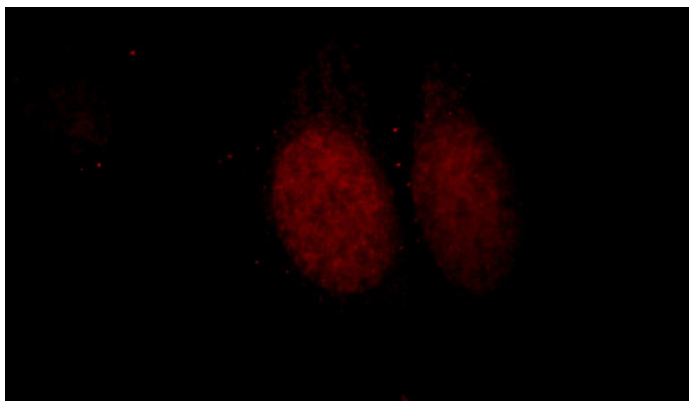
Recommended Dilution:



Immunohistochemical of paraffin-embedded human lung cancer using Catalog No:110064(DPF2 antibody) at dilution of 1:50 (under 10x lens)

# DPF2 antibody

Catalog Number: 110064



Immunofluorescent analysis of HepG2 cells, using DPF2 antibody Catalog No:110064 at 1:25 dilution and Rhodamine-labeled goat anti-rabbit IgG (red).

IP Result of anti-DPF2 (IP:Catalog No:110064, 4ug; Detection:Catalog No:110064 1:500) with Jurkat cells lysate 1200ug.