

# domain-II-of-FIZ1 antibody



Catalog Number: 110057

## Product name

domain-II-of-FIZ1 antibody

## Specificity

Human; other species not tested.

## Antibody description

domain-II-of-FIZ1 Rabbit Polyclonal antibody.  
Positive IHC detected in human kidney tissue.  
Positive WB detected in human kidney tissue.  
Observed molecular weight by Western-blot: 60 kDa

## Preparation

This antibody was obtained by immunization of Peptide (Accession Number: NM\_032836).  
Purification method: Antigen affinity purified.

## Formulation

PBS with 0.02% sodium azide and 50% glycerol pH 7.3.

## Storage

Store at -20°C. DO NOT ALIQUOT

## Clonality

Polyclonal

## Ig Type

Rabbit IgG

## Applications

ELISA, WB, IHC

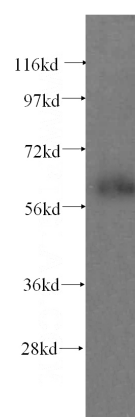
## Dilutions

Recommended Dilution:

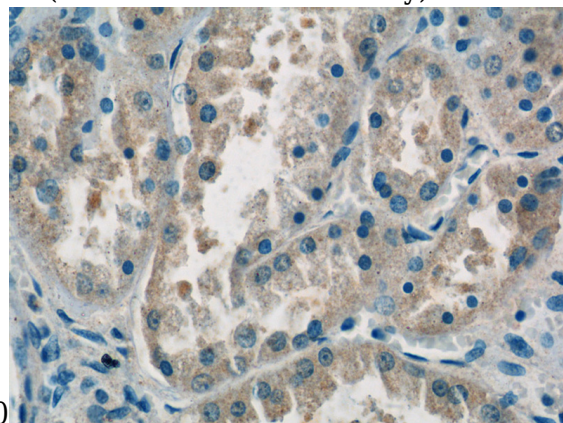
WB: 1:200-1:1000

IHC: 1:20-1:200

## Validations



human kidney tissue were subjected to SDS PAGE followed by western blot with Catalog No:110057(domain-II-of-FIZ1 antibody) at dilution



of 1:200

Immunohistochemistry of paraffin-embedded human kidney tissue slide using Catalog No:110057(domain-II-of-FIZ1 Antibody) at dilution of 1:50 (under 40x lens)