

# DOCK8 antibody



Catalog Number: 110047

## Product name

DOCK8 antibody

WB: 1:200-1:2000

IHC: 1:20-1:200

## Specificity

Human, Mouse, Rat; other species not tested.

## Antibody description

DOCK8 Rabbit Polyclonal antibody. Positive IHC detected in human kidney tissue, human heart tissue, mouse kidney tissue, mouse lung tissue. Positive WB detected in A549 cells, mouse lung tissue, Raji cells. Observed molecular weight by Western-blot: 230-239 kDa

## Preparation

This antibody was obtained by immunization of DOCK8 recombinant protein (Accession Number: BC019102). Purification method: Antigen affinity purified.

## Formulation

PBS with 0.1% sodium azide and 50% glycerol pH 7.3.

## Storage

Store at -20°C. DO NOT ALIQUOT

## Clonality

Polyclonal

## Ig Type

Rabbit IgG

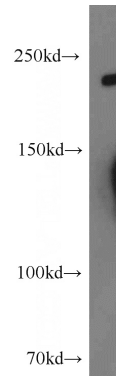
## Applications

ELISA, WB, IHC

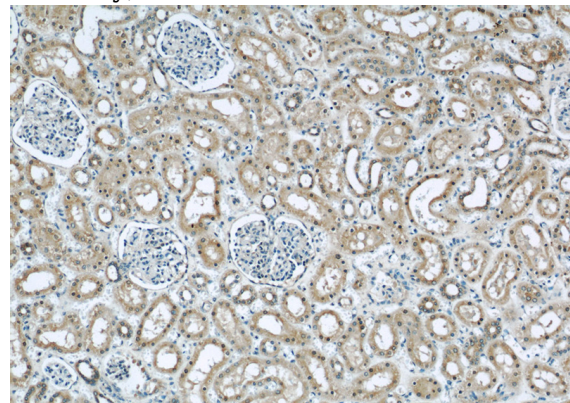
## Dilutions

Recommended Dilution:

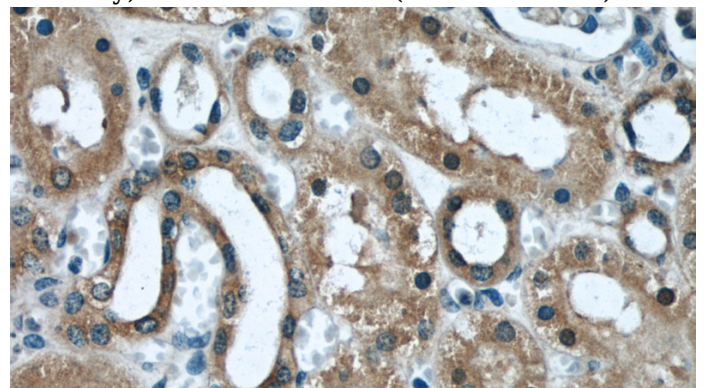
## Validations



A549 cells were subjected to SDS PAGE followed by western blot with Catalog No:110047(DockK8 antibody) at dilution of 1:800



Immunohistochemical of paraffin-embedded human kidney using Catalog No:110047(DockK8 antibody) at dilution of 1:50 (under 10x lens)



Immunohistochemical of paraffin-embedded human kidney using Catalog No:110047(DockK8 antibody) at dilution of 1:50 (under 40x lens)