

DTL antibody

Catalog Number: 110032

Product name

DTL antibody

Specificity

Human, Mouse, Rat; other species not tested.

Antibody description

DTL Rabbit Polyclonal antibody. Positive WB detected in HeLa cells, L02 cells, MCF7 cells. Positive IP detected in mouse testis tissue. Observed molecular weight by Western-blot: 79kd

Preparation

This antibody was obtained by immunization of DTL recombinant protein (Accession Number: NM_016448). Purification method: Antigen affinity purified.

Formulation

PBS with 0.02% sodium azide and 50% glycerol pH 7.3.

Storage

Store at -20°C. DO NOT ALIQUOT

Clonality

Polyclonal

Ig Type

Rabbit IgG

Applications

ELISA, WB, IP

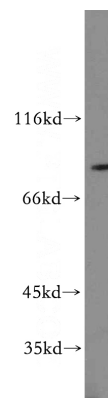
Dilutions

Recommended Dilution:

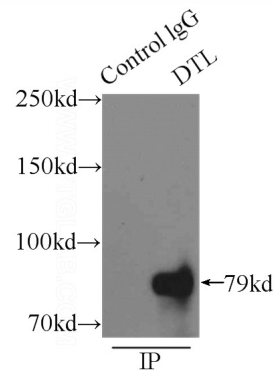
WB: 1:200-1:1000

IP: 1:200-1:2000

Validations



HeLa cells were subjected to SDS PAGE followed by western blot with Catalog No:110032(DTL antibody) at dilution of 1:200



IP Result of anti-DTL (IP:Catalog No:110032, 3ug; Detection:Catalog No:110032 1:500) with mouse testis tissue lysate 8000ug.