

DSS1 antibody



Catalog Number: 110030

Product name

DSS1 antibody

Specificity

Human; other species not tested.

Antibody description

DSS1 Rabbit Polyclonal antibody. Positive IF detected in Hela cells. Positive WB detected in HeLa cells. Observed molecular weight by Western-blot: 8-10 kDa

Preparation

This antibody was obtained by immunization of DSS1 recombinant protein (Accession Number: NM_006304). Purification method: Antigen affinity purified.

Formulation

PBS with 0.02% sodium azide and 50% glycerol pH 7.3.

Storage

Store at -20°C. DO NOT ALIQUOT

Clonality

Polyclonal

Ig Type

Rabbit IgG

Applications

ELISA, WB, IF

Dilutions

Recommended Dilution:

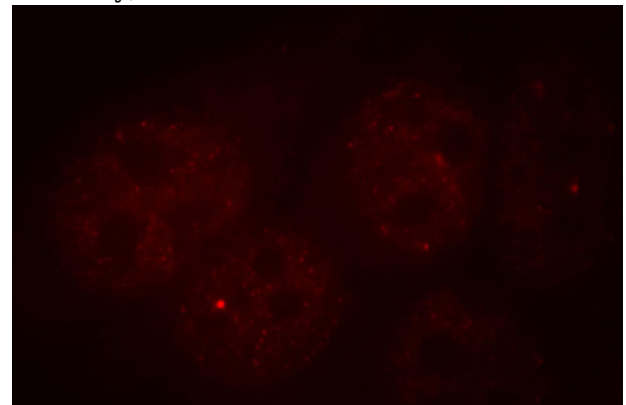
WB: 1:200-1:2000

IF: 1:10-1:100

Validations



HeLa cells were subjected to SDS PAGE followed by western blot with Catalog No:110030(SHFM1 antibody) at dilution of 1:300



Immunofluorescent analysis of HeLa cells, using SHFM1 antibody Catalog No:110030 at 1:25 dilution and Rhodamine-labeled goat anti-rabbit IgG (red).