

DRAP1 antibody

Catalog Number: 110014

Product name

DRAP1 antibody

IHC: 1:20-1:200

IF: 1:20-1:200

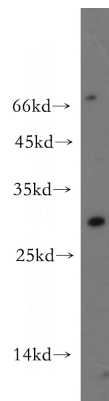
Specificity

Human, Mouse, Rat; other species not tested.

Antibody description

DRAP1 Rabbit Polyclonal antibody. Positive IHC detected in human pancreas cancer tissue. Positive IF detected in HepG2 cells. Positive WB detected in mouse kidney tissue, human brain tissue, human heart tissue. Observed molecular weight by Western-blot: 26-30kd

Validations



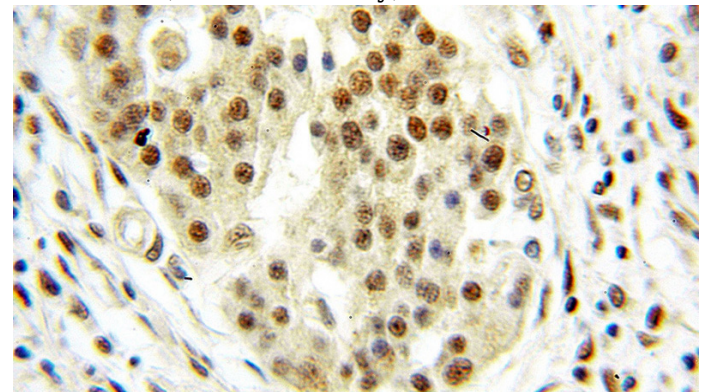
Preparation

This antibody was obtained by immunization of DRAP1 recombinant protein (Accession Number: NM_006442). Purification method: Antigen affinity purified.

mouse kidney tissue were subjected to SDS PAGE followed by western blot with Catalog No:110014(DRAP1 antibody) at dilution of 1:300

Formulation

PBS with 0.1% sodium azide and 50% glycerol pH 7.3.



Storage

Store at -20°C. DO NOT ALIQUOT

Clonality

Polyclonal

Immunohistochemical of paraffin-embedded human pancreas cancer using Catalog No:110014(DRAP1 antibody) at dilution of 1:50 (under 10x lens)

Ig Type

Rabbit IgG

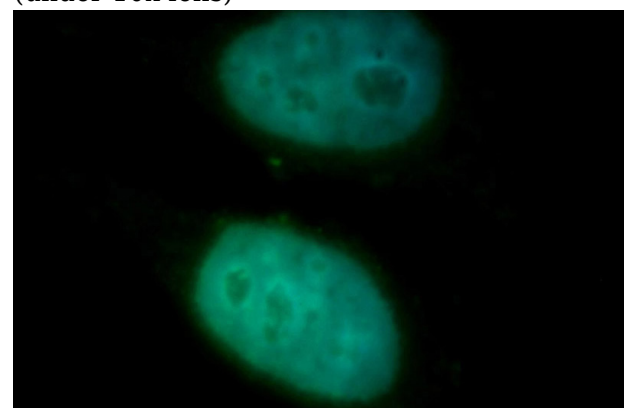
Applications

ELISA, WB, IHC, IF

Dilutions

Recommended Dilution:

WB: 1:200-1:1000



Immunofluorescent analysis of HepG2 cells, using

DRAP1 antibody



Catalog Number: 110014

DRAP1 antibody Catalog No:110014 at 1:100 dilution and FITC-labeled donkey anti-rabbit

IgG(green). Blue pseudocolor = DAPI (fluorescent DNA dye).