

# DR1 antibody

Catalog Number: 110010

## Product name

DR1 antibody

## Specificity

human, mouse, rat; other species not tested.

## Antibody description

DR1 Rabbit Polyclonal antibody. Positive IHC detected in human breast cancer. Positive WB detected in mouse testis tissue, PC-3 cells. Observed molecular weight by Western-blot: 19-20kd

## Preparation

This antibody was obtained by immunization of DR1 recombinant protein (Accession Number: NM\_001938). Purification method: Antigen affinity purified.

## Formulation

PBS with 0.1% sodium azide and 50% glycerol pH 7.3.

## Storage

Store at -20°C. DO NOT ALIQUOT

## Clonality

Polyclonal

## Ig Type

Rabbit IgG

## Applications

ELISA, WB, IHC

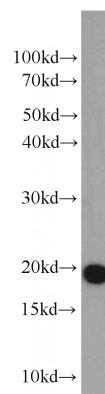
## Dilutions

Recommended Dilution:

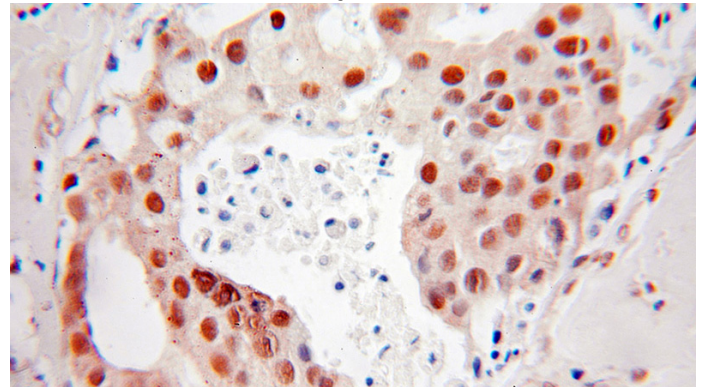
WB: 1:500-1:5000

IHC: 1:10-1:100

## Validations



mouse testis tissue were subjected to SDS PAGE followed by western blot with Catalog No:110010(DR1 antibody) at dilution of 1:1000



Immunohistochemical of paraffin-embedded human breast cancer using Catalog No:110010(DR1 antibody) at dilution of 1:10 (under 25x lens)