

DMC1 antibody

Catalog Number: 110002

Product name

DMC1 antibody

WB: 1:1000-1:10000

IP: 1:200-1:2000

Specificity

Human, Mouse, Rat; other species not tested.

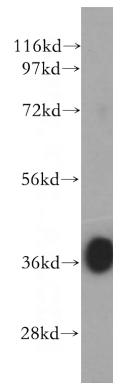
IHC: 1:20-1:200

IF: 1:20-1:200

Antibody description

DMC1 Rabbit Polyclonal antibody. Positive IF detected in HeLa cells. Positive IHC detected in human ovary tumor tissue. Positive IP detected in mouse testis tissue. Positive WB detected in mouse spermatophore tissue, HeLa cells, human testis tissue. Observed molecular weight by Western-blot: 37 kDa

Validations



Preparation

This antibody was obtained by immunization of DMC1 recombinant protein (Accession Number: BC035658). Purification method: Antigen affinity purified.

mouse spermatophore tissue were subjected to SDS PAGE followed by western blot with Catalog No:110002(DMC1 antibody) at dilution of 1:1000

Formulation

PBS with 0.02% sodium azide and 50% glycerol pH 7.3.

Storage

Store at -20°C. DO NOT ALIQUOT

Clonality

Polyclonal

Ig Type

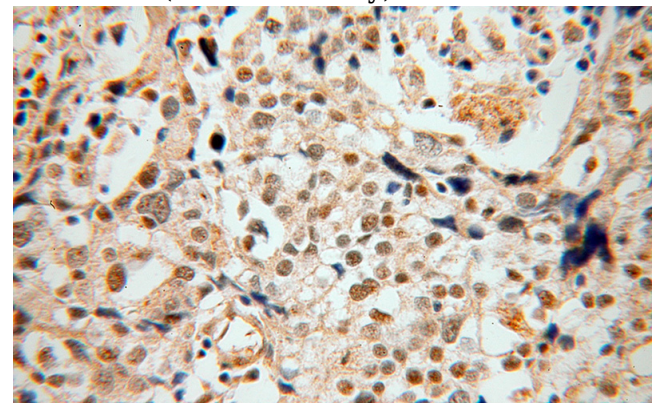
Rabbit IgG

Applications

ELISA, WB, IHC, IF, IP

Dilutions

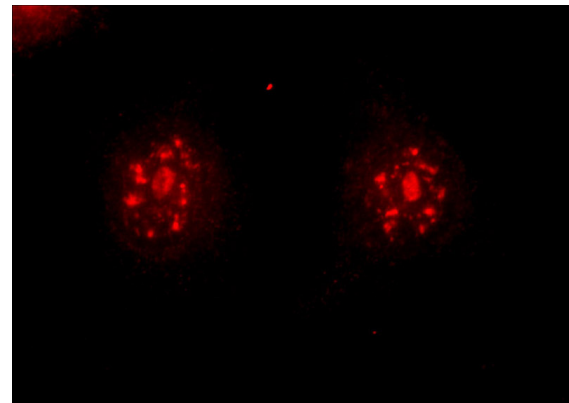
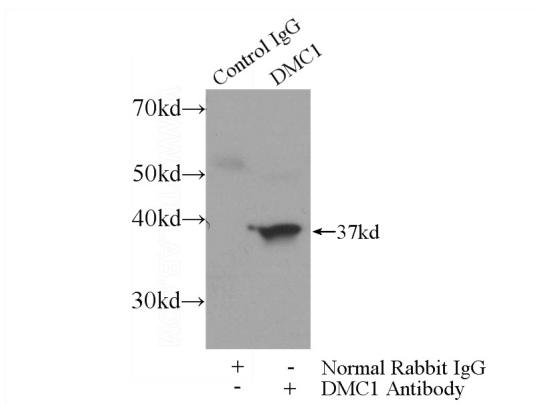
Recommended Dilution:



Immunohistochemical of paraffin-embedded human ovary tumor using Catalog No:110002(DMC1 antibody) at dilution of 1:100 (under 40x lens)

DMC1 antibody

Catalog Number: 110002



IP Result of anti-DMC1 (IP:Catalog No:110002, 3ug; Detection:Catalog No:110002 1:600) with mouse testis tissue lysate 4800ug.

Immunofluorescent analysis of HeLa cells using Catalog No:110002(DMC1 Antibody) at dilution of 1:50 and Rhodamine-Goat anti-Rabbit IgG