

# DIS3 antibody



Catalog Number: 109946

## Product name

DIS3 antibody

IHC: 1:20-1:200

IF: 1:50-1:500

## Specificity

Human, Mouse, Rat; other species not tested.

## Antibody description

DIS3 Rabbit Polyclonal antibody. Positive IF detected in HeLa cells. Positive IHC detected in human ovary tumor tissue. Positive WB detected in HeLa cells, human brain tissue, mouse ovary tissue, mouse testis tissue. Observed molecular weight by Western-blot: 110 kDa

## Preparation

This antibody was obtained by immunization of DIS3 recombinant protein (Accession Number: NM\_014953). Purification method: Antigen affinity purified.

## Formulation

PBS with 0.02% sodium azide and 50% glycerol pH 7.3.

## Storage

Store at -20°C. DO NOT ALIQUOT

## Clonality

Polyclonal

## Ig Type

Rabbit IgG

## Applications

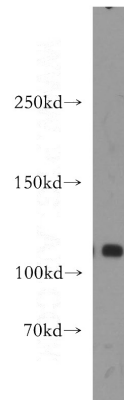
ELISA, WB, IHC, IF

## Dilutions

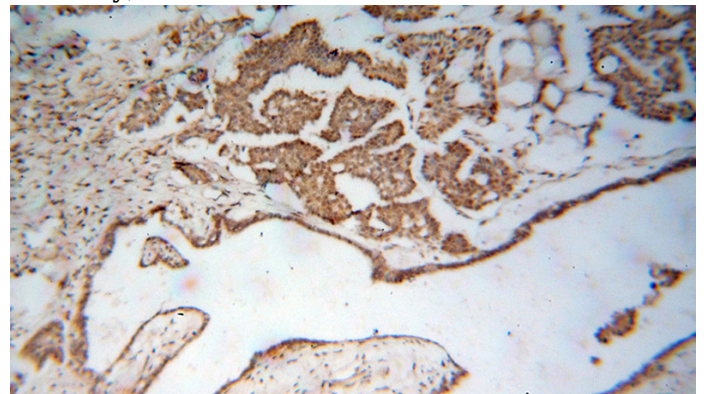
Recommended Dilution:

WB: 1:500-1:5000

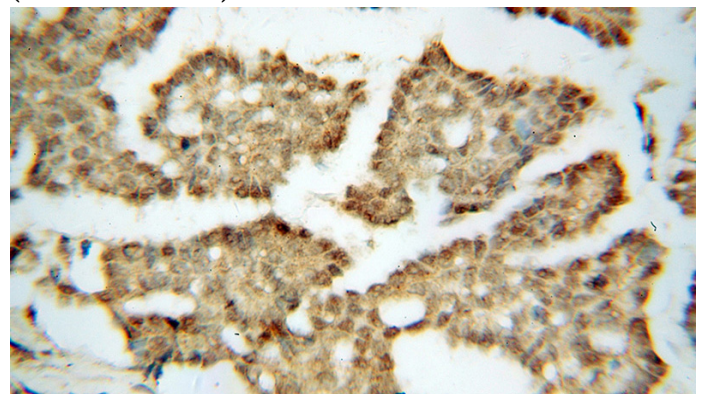
## Validations



HeLa cells were subjected to SDS PAGE followed by western blot with Catalog No:109946(DIS3 antibody) at dilution of 1:500



Immunohistochemical of paraffin-embedded human ovary tumor using Catalog No:109946(DIS3 antibody) at dilution of 1:100 (under 10x lens)



Immunohistochemical of paraffin-embedded

# DIS3 antibody



Catalog Number: 109946

---

human ovary tumor using Catalog

No:109946(DIS3 antibody) at dilution of 1:100  
(under 40x lens)