

DIAPH3 antibody

Catalog Number: 109938

Product name

DIAPH3 antibody

IHC: 1:20-1:200

IF: 1:20-1:200

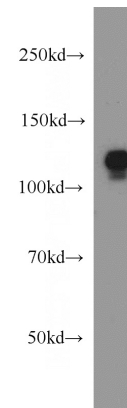
Specificity

Human; other species not tested.

Validations

Antibody description

DIAPH3 Rabbit Polyclonal antibody. Positive WB detected in HeLa cells, DU 145 cells, HEK-293 cells. Positive IF detected in HeLa cells. Positive IHC detected in human cervical cancer tissue, human prostate cancer tissue. Observed molecular weight by Western-blot: 125-137kd



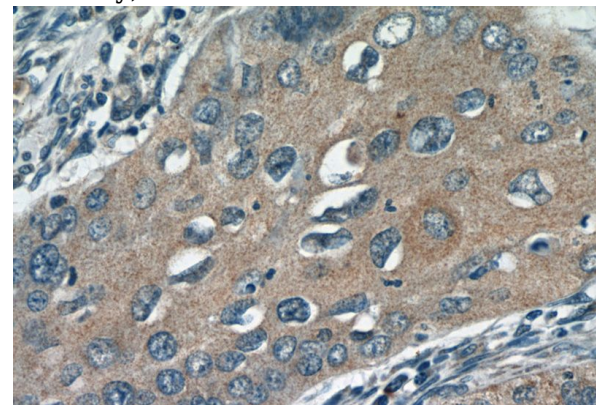
Preparation

This antibody was obtained by immunization of DIAPH3 recombinant protein (Accession Number: NM_030932). Purification method: Antigen affinity purified.

HeLa cells were subjected to SDS PAGE followed by western blot with Catalog No:109938(DIAPH3 antibody) at dilution of 1:1000

Formulation

PBS with 0.02% sodium azide and 50% glycerol pH 7.3.



Storage

Store at -20°C. DO NOT ALIQUOT

Immunohistochemistry of paraffin-embedded human cervical cancer tissue slide using Catalog No:109938(DIAPH3 Antibody) at dilution of 1:50

Clonality

Polyclonal

Ig Type

Rabbit IgG

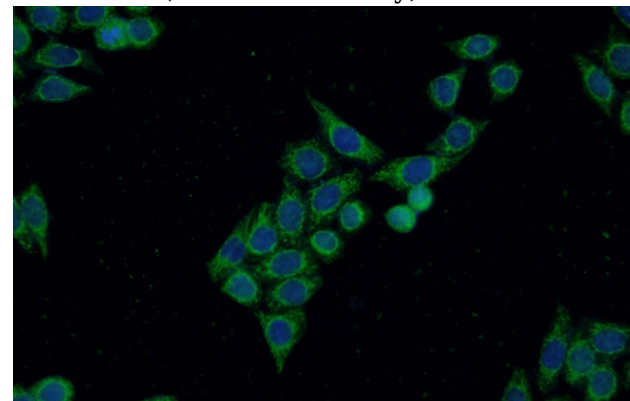
Applications

ELISA, WB, IHC, IF

Dilutions

Recommended Dilution:

WB: 1:500-1:5000



Immunofluorescent analysis of HeLa cells using Catalog No:109938(DIAPH3 Antibody) at dilution

DIAPH3 antibody



Catalog Number: 109938

of 1:50 and Alexa Fluor 488-conjugated AffiniPure Goat Anti-Rabbit IgG(H+L)