

DGCR8 C-terminal antibody



Catalog Number: 109905

Product name

DGCR8 C-terminal antibody

Specificity

Human, Mouse, Rat; other species not tested.

Antibody description

DGCR8 C-terminal Rabbit Polyclonal antibody. Positive WB detected in Jurkat cells, A431 cells, HEK-293 cells, HeLa cells, mouse testis tissue. Positive IP detected in HEK-293 cells. Positive FC detected in HeLa cells, SH-SY5Y cells. Positive IF detected in SH-SY5Y cells. Positive IHC detected in human breast cancer tissue, human colon cancer tissue. Observed molecular weight by Western-blot: 120 kDa

Preparation

This antibody was obtained by immunization of DGCR8 C-terminal recombinant protein (Accession Number: BC009323). Purification method: Antigen affinity purified.

Formulation

PBS with 0.1% sodium azide and 50% glycerol pH 7.3.

Storage

Store at -20°C. DO NOT ALIQUOT

Clonality

Polyclonal

Ig Type

Rabbit IgG

Applications

ELISA, WB, IHC, IF, IP, FC

Dilutions

Recommended Dilution:

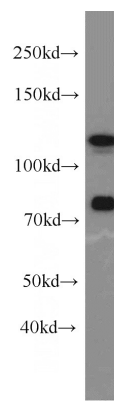
WB: 1:200-1:2000

IP: 1:200-1:2000

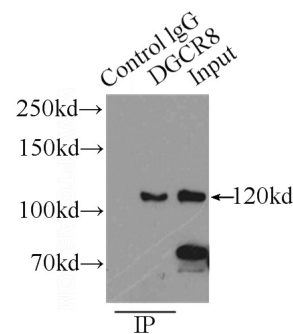
IHC: 1:20-1:200

IF: 1:20-1:200

Validations



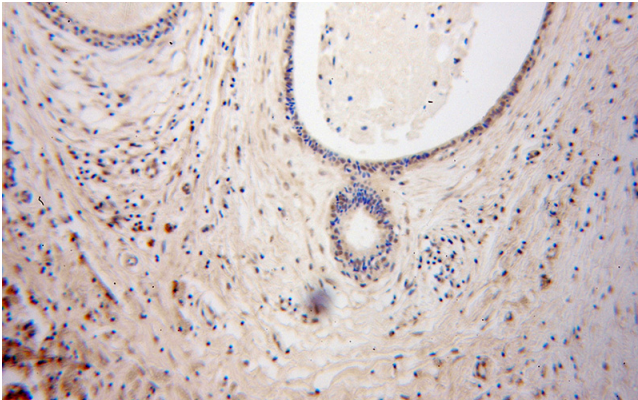
Jurkat cells were subjected to SDS PAGE followed by western blot with Catalog No:109905(DGCR8 antibody) at dilution of 1:800



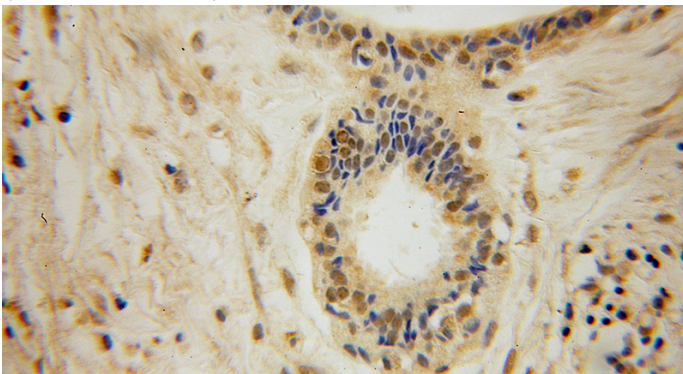
IP Result of anti-DGCR8 (IP:Catalog No:109905, 3ug; Detection:Catalog No:109905 1:800) with HEK-293 cells lysate 2700ug.

DGCR8 C-terminal antibody

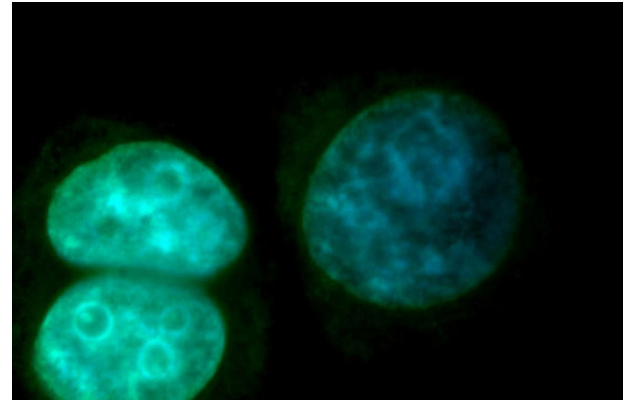
Catalog Number: 109905



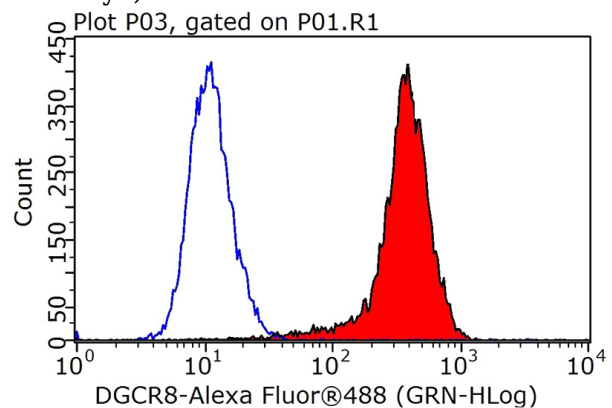
Immunohistochemical of paraffin-embedded human breast cancer using Catalog No:109905(DGCR8 antibody) at dilution of 1:100 (under 10x lens)



Immunohistochemical of paraffin-embedded human breast cancer using Catalog No:109905(DGCR8 antibody) at dilution of 1:100 (under 40x lens)



Immunofluorescent analysis of SH-SY5Y cells, using DGCR8 antibody Catalog No:109905 at 1:50 dilution and FITC-labeled donkey anti-rabbit IgG(green). Blue pseudocolor = DAPI (fluorescent DNA dye).



1X10⁶ HeLa cells were stained with 0.2ug DGCR8 antibody (Catalog No:109905, red) and control antibody (blue). Fixed with 4% PFA blocked with 3% BSA (30 min). Alexa Fluor 488-conjugated AffiniPure Goat Anti-Rabbit IgG(H+L) with dilution 1:1000.