

DEPDC6 antibody



Catalog Number: 109892

Product name

DEPDC6 antibody

IHC: 1:20-1:200

IF: 1:10-1:100

Specificity

Human, Mouse, Rat; other species not tested.

Antibody description

DEPDC6 Rabbit Polyclonal antibody. Positive WB detected in HeLa cells, A2780 cells, COLO 320 cells, HEK-293 cells, MCF7 cells. Positive IHC detected in human liver cancer. Positive IF detected in HepG2 cells. Observed molecular weight by Western-blot: 40-45kd

Preparation

This antibody was obtained by immunization of Peptide (Accession Number: NM_022783).
Purification method: Antigen affinity purified.

Formulation

PBS with 0.02% sodium azide and 50% glycerol
pH 7.3.

Storage

Store at -20°C. DO NOT ALIQUOT

Clonality

Polyclonal

Ig Type

Rabbit IgG

Applications

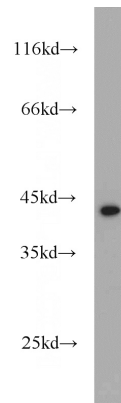
ELISA, WB, IHC, IF

Dilutions

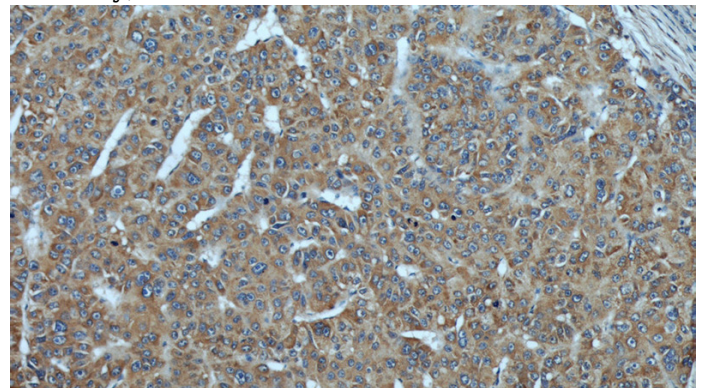
Recommended Dilution:

WB: 1:500-1:5000

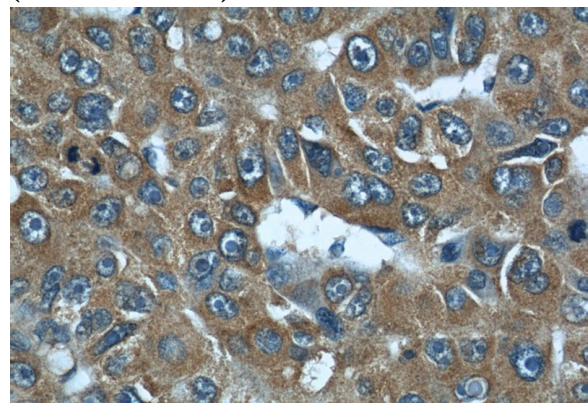
Validations



HeLa cells were subjected to SDS PAGE followed by western blot with Catalog No:109892(DEPDC6 antibody) at dilution of 1:1000



Immunohistochemical of paraffin-embedded human liver cancer using Catalog No:109892(DEPDC6 antibody) at dilution of 1:50 (under 10x lens)



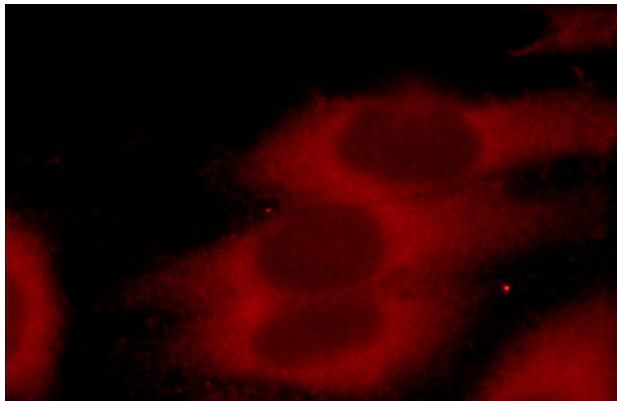
Immunohistochemical of paraffin-embedded

DEPDC6 antibody



Catalog Number: 109892

human liver cancer using Catalog
No:109892(DEPDC6 antibody) at dilution of 1:50
(under 40x lens)



Immunofluorescent analysis of HepG2 cells using
Catalog No:109892(DEPDC6 Antibody) at dilution
of 1:25 and Rhodamine-Goat anti-Rabbit IgG