

# DBR1 antibody

Catalog Number: 109880

## Product name

DBR1 antibody

IHC: 1:20-1:200

IF: 1:10-1:100

## Specificity

Human, Mouse, Rat; other species not tested.

## Antibody description

DBR1 Rabbit Polyclonal antibody. Positive WB detected in human brain tissue, HepG2 cells. Positive IF detected in Hela cells. Positive IHC detected in human placenta tissue. Observed molecular weight by Western-blot: 62 kDa

## Preparation

This antibody was obtained by immunization of DBR1 recombinant protein (Accession Number: NM\_016216). Purification method: Antigen affinity purified.

## Formulation

PBS with 0.02% sodium azide and 50% glycerol pH 7.3.

## Storage

Store at -20°C. DO NOT ALIQUOT

## Clonality

Polyclonal

## Ig Type

Rabbit IgG

## Applications

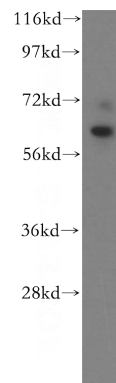
ELISA, WB, IHC, IF

## Dilutions

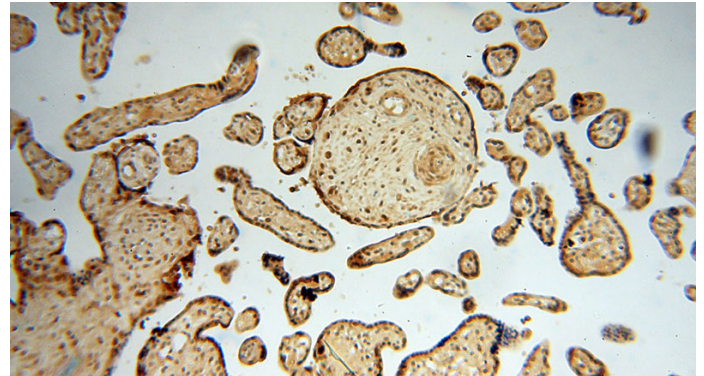
Recommended Dilution:

WB: 1:500-1:5000

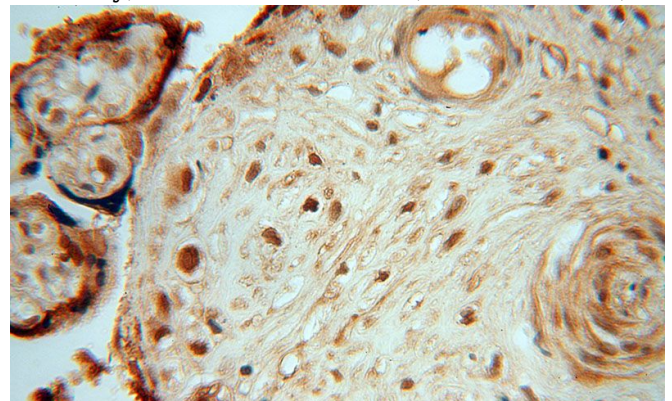
## Validations



human brain tissue were subjected to SDS PAGE followed by western blot with Catalog No:109880(DBR1 antibody) at dilution of 1:500



Immunohistochemical of paraffin-embedded human placenta using Catalog No:109880(DBR1 antibody) at dilution of 1:100 (under 10x lens)



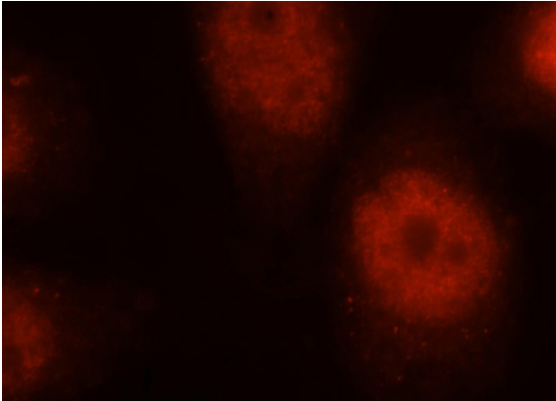
Immunohistochemical of paraffin-embedded human placenta using Catalog No:109880(DBR1 antibody) at dilution of 1:100 (under 10x lens)

# DBR1 antibody

Catalog Number: 109880

---

antibody) at dilution of 1:100 (under 40x lens)



Immunofluorescent analysis of HeLa cells, using DBR1 antibody Catalog No:109880 at 1:25 dilution and Rhodamine-labeled goat anti-rabbit IgG (red).