

DACH1 antibody

Catalog Number: 109853

Product name

DACH1 antibody

IP: 1:500-1:5000

IHC: 1:20-1:200

Specificity

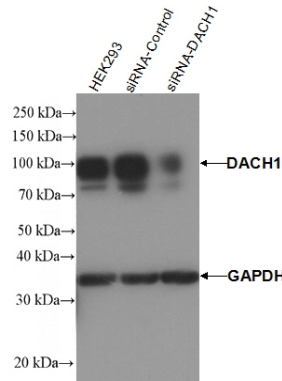
Human, Mouse, Rat; other species not tested.

IF: 1:20-1:200

Antibody description

DACH1 Rabbit Polyclonal antibody. Positive IF detected in HEK-293 cells. Positive IHC detected in human prostate cancer tissue. Positive IP detected in HEK-293 cells. Positive WB detected in HEK-293 cells, HEK-293. Observed molecular weight by Western-blot: 97-100 kDa

Validations



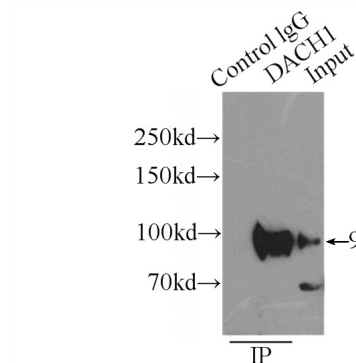
Preparation

This antibody was obtained by immunization of DACH1 recombinant protein (Accession Number: BC021219). Purification method: Antigen affinity purified.

HEK293 cells (Native, siRNA-control, siRNA-DACH1) were subjected to SDS PAGE followed by western blot with Catalog No:109853 (DACH1 antibody) at dilution of 1:1000

Formulation

PBS with 0.1% sodium azide and 50% glycerol pH 7.3.



Storage

Store at -20°C. DO NOT ALIQUOT

Clonality

Polyclonal

Ig Type

Rabbit IgG

Applications

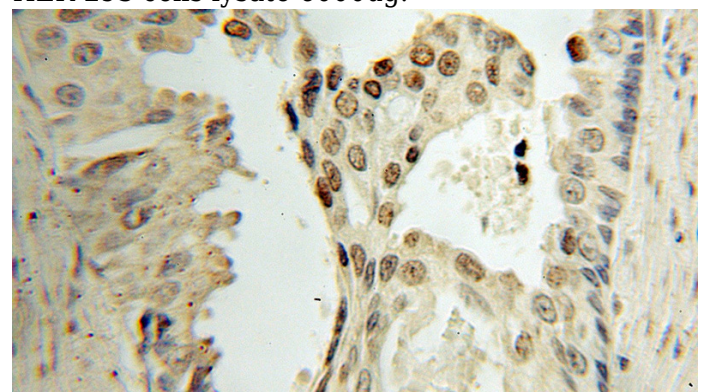
ELISA, IHC, IP, WB, IF

Dilutions

Recommended Dilution:

WB: 1:200-1:2000

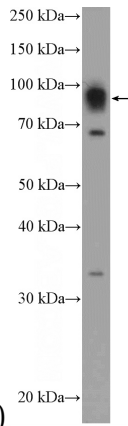
IP Result of anti-DACH1 (IP:Catalog No:109853, 4ug; Detection:Catalog No:109853 1:1000) with HEK-293 cells lysate 6000ug.



DACH1 antibody

Catalog Number: 109853

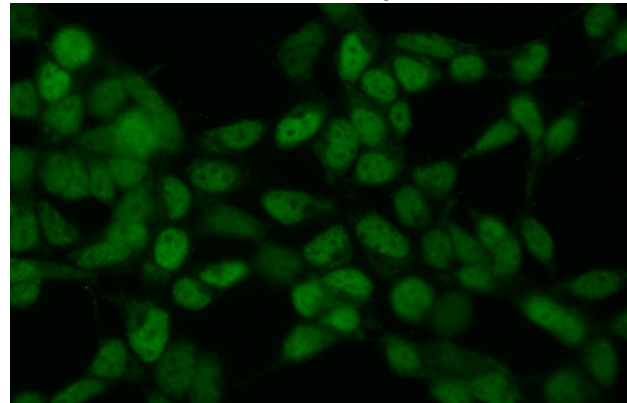
Immunohistochemical of paraffin-embedded human prostate cancer using Catalog No:109853(DACH1 antibody) at dilution of 1:50



(under 10x lens)

HEK-293 cells were subjected to SDS PAGE followed by western blot with Catalog

No:109853(DACH1 Antibody) at dilution of 1:600



Immunofluorescent analysis of (10% Formaldehyde) fixed HEK-293 cells using Catalog No:109853(DACH1 Antibody) at dilution of 1:50 and Alexa Fluor 488-conjugated AffiniPure Goat Anti-Rabbit IgG(H+L)