

# DDX6 antibody

Catalog Number: 109842

## Product name

DDX6 antibody

IP: 1:200-1:2000

IHC: 1:20-1:200

## Specificity

Human, Mouse, Rat; other species not tested.

## Antibody description

DDX6 Rabbit Polyclonal antibody. Positive WB detected in K-562 cells, HeLa cells, mouse testis tissue. Positive IP detected in mouse testis tissue. Positive IHC detected in human breast cancer tissue. Observed molecular weight by Western-blot: 54kd

## Preparation

This antibody was obtained by immunization of DDX6 recombinant protein (Accession Number: NM\_004397). Purification method: Antigen affinity purified.

## Formulation

PBS with 0.02% sodium azide and 50% glycerol pH 7.3.

## Storage

Store at -20°C. DO NOT ALIQUOT

## Clonality

Polyclonal

## Ig Type

Rabbit IgG

## Applications

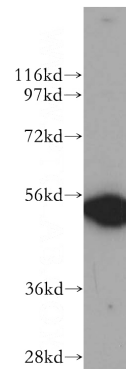
ELISA, WB, IHC, IP

## Dilutions

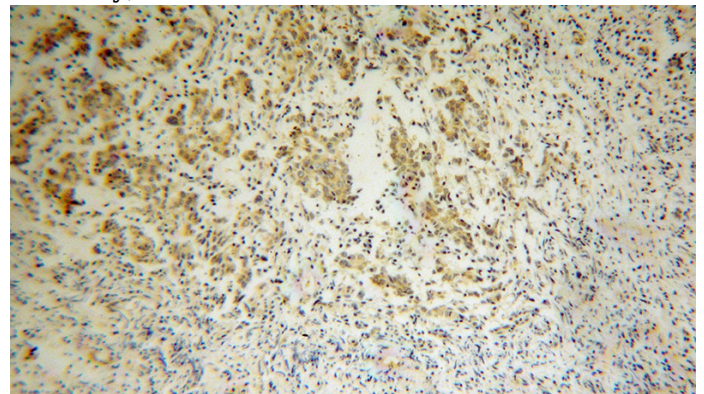
Recommended Dilution:

WB: 1:500-1:5000

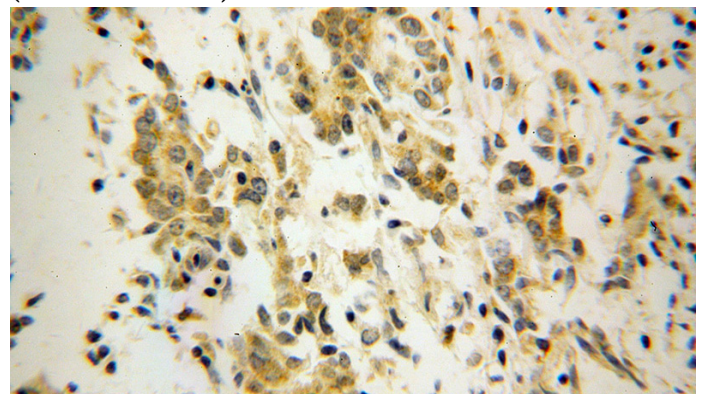
## Validations



K-562 cells were subjected to SDS PAGE followed by western blot with Catalog No:109842(P54 antibody) at dilution of 1:500



Immunohistochemical of paraffin-embedded human breast cancer using Catalog No:109842(P54 antibody) at dilution of 1:100 (under 10x lens)



Immunohistochemical of paraffin-embedded

# DDX6 antibody

Catalog Number: 109842

---

human breast cancer using Catalog No:109842(P54 antibody) at dilution of 1:100 (under 40x lens)

IP Result of anti-P54 (IP:Catalog No:109842, 4ug; Detection:Catalog No:109842 1:500) with mouse testis tissue lysate 4000ug.

