

# DDX5,p68 antibody



Catalog Number: 109835

## Product name

DDX5,p68 antibody

## Specificity

Human,Mouse,Rat; other species not tested.

## Antibody description

DDX5,p68 Rabbit Polyclonal antibody. Positive IHC detected in human breast cancer tissue. Positive WB detected in NIH/3T3 cells, A431 cells, HeLa cells. Observed molecular weight by Western-blot: 65-68kd

## Preparation

This antibody was obtained by immunization of DDX5,p68 recombinant protein (Accession Number: NM\_001320596). Purification method: Antigen affinity purified.

## Formulation

PBS with 0.1% sodium azide and 50% glycerol pH 7.3.

## Storage

Store at -20°C. DO NOT ALIQUOT

## Clonality

Polyclonal

## Ig Type

Rabbit IgG

## Applications

ELISA, WB, IHC

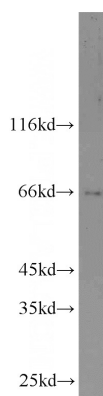
## Dilutions

Recommended Dilution:

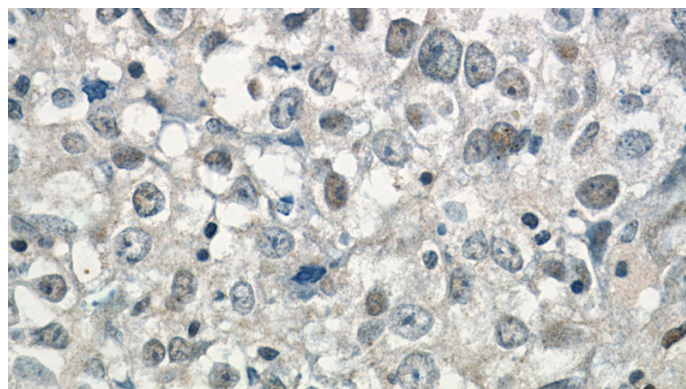
WB: 1:200-1:2000

IHC: 1:20-1:200

## Validations



NIH/3T3 cells were subjected to SDS PAGE followed by western blot with Catalog No:109835(DDX5,p68 antibody) at dilution of 1:1000



Immunohistochemistry of paraffin-embedded human breast cancer tissue slide using Catalog No:109835(DDX5,p68 Antibody) at dilution of 1:50 (under 40x lens)