

# Cytohesin 2 antibody



Catalog Number: 109788

## Product name

Cytohesin 2 antibody

IP: 1:200-1:2000

IHC: 1:20-1:200

## Specificity

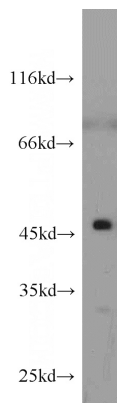
Human, Mouse, Rat; other species not tested.

IF: 1:20-1:200

## Antibody description

Cytohesin 2 Rabbit Polyclonal antibody. Positive WB detected in mouse heart tissue. Positive IP detected in mouse heart tissue. Positive IF detected in HepG2 cells. Positive IHC detected in human ovary tumor tissue. Observed molecular weight by Western-blot: 47 kDa

## Validations



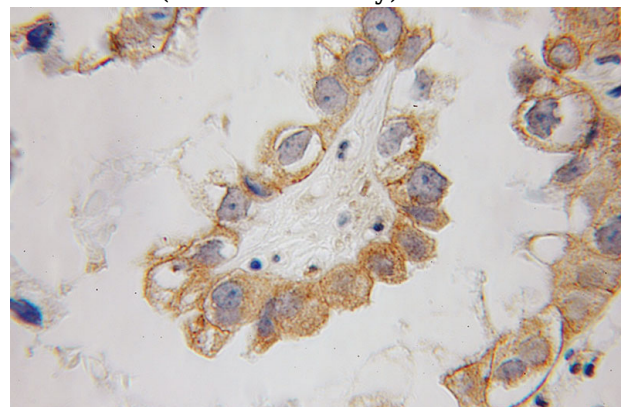
## Preparation

This antibody was obtained by immunization of Cytohesin 2 recombinant protein (Accession Number: NM\_017457). Purification method: Antigen affinity purified.

mouse heart tissue were subjected to SDS PAGE followed by western blot with Catalog No:109788(CYTH2 antibody) at dilution of 1:1000

## Formulation

PBS with 0.1% sodium azide and 50% glycerol pH 7.3.



## Storage

Store at -20°C. DO NOT ALIQUOT

## Clonality

Polyclonal

## Ig Type

Rabbit IgG

## Applications

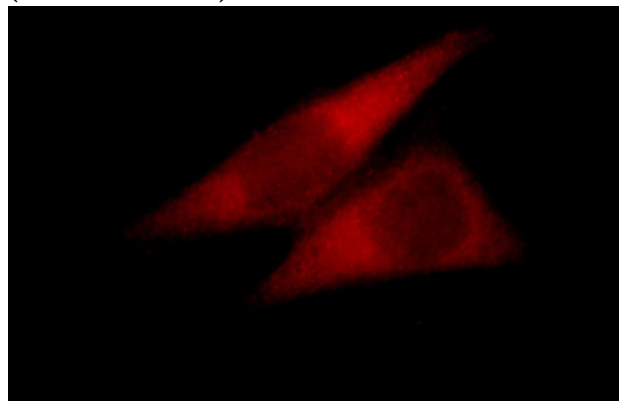
ELISA, IHC, IF, WB, IP

## Dilutions

Recommended Dilution:

WB: 1:500-1:5000

Immunohistochemical of paraffin-embedded human ovary tumor using Catalog No:109788(CYTH2 antibody) at dilution of 1:50 (under 40x lens)

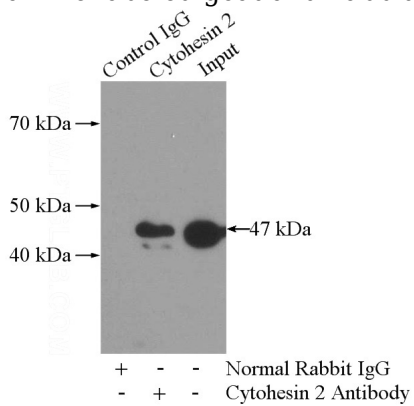


# Cytohesin 2 antibody

Catalog Number: 109788

Immunofluorescent analysis of HeLa cells, using CYTH2 antibody Catalog No:109788 at 1:25 dilution and Rhodamine-labeled goat anti-rabbit

IP Result of anti-CYTH2 (IP:Catalog No:109788, 4ug; Detection:Catalog No:109788 1:500) with mouse heart tissue lysate 4000ug.



IgG (red).