

# DcR2 antibody



Catalog Number: 109756

## Product name

DcR2 antibody

IHC: 1:20-1:200

## Specificity

Human; other species not tested.

## Antibody description

DcR2 Rabbit Polyclonal antibody. Positive WB detected in Apoptosised HeLa cells, A549 cells, HeLa cells. Positive IHC detected in human kidney tissue. Observed molecular weight by Western-blot: 47-50 kDa

## Preparation

This antibody was obtained by immunization of DcR2 recombinant protein (Accession Number: NM\_003840). Purification method: Antigen affinity purified.

## Formulation

PBS with 0.02% sodium azide and 50% glycerol pH 7.3.

## Storage

Store at -20°C. DO NOT ALIQUOT

## Clonality

Polyclonal

## Ig Type

Rabbit IgG

## Applications

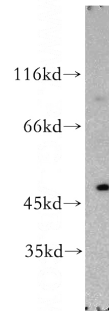
ELISA, WB, IHC

## Dilutions

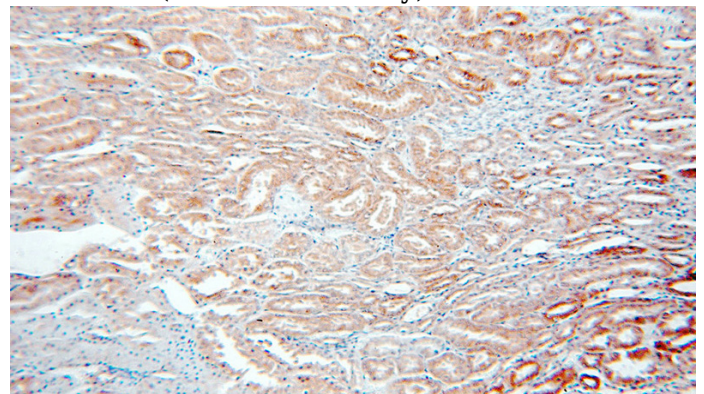
Recommended Dilution:

WB: 1:500-1:5000

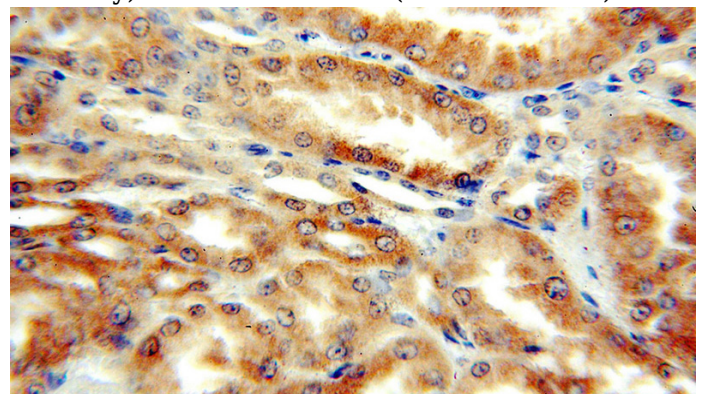
## Validations



Apoptosised HeLa cells were subjected to SDS PAGE followed by western blot with Catalog No:109756(TRAILR4 antibody) at dilution of 1:300



Immunohistochemical of paraffin-embedded human kidney using Catalog No:109756(TRAILR4 antibody) at dilution of 1:50 (under 10x lens)



Immunohistochemical of paraffin-embedded human kidney using Catalog No:109756(TRAILR4 antibody) at dilution of 1:50 (under 40x lens)