

# DCI antibody



Catalog Number: 109749

## Product name

DCI antibody

## Immunogen

[Human DCI Recombinant protein \(GST tag\)](#)

## Specificity

Human, Mouse, Rat; other species not tested.

## Antibody description

DCI Rabbit Polyclonal antibody. Positive WB detected in HEK-293 cells, BxPC-3 cells, human brain tissue, human kidney tissue, human lung tissue. Positive IF detected in BxPC-3 cells. Positive IHC detected in human prostate cancer tissue. Observed molecular weight by Western-blot: 31kd

## Preparation

This antibody was obtained by immunization of DCI recombinant protein (Accession Number: NM\_001178029). Purification method: Antigen affinity purified.

## Formulation

PBS with 0.1% sodium azide and 50% glycerol pH 7.3.

## Storage

Store at -20°C. DO NOT ALIQUOT

## Clonality

Polyclonal

## Ig Type

Rabbit IgG

## Applications

ELISA, IHC, WB, IF

## Dilutions

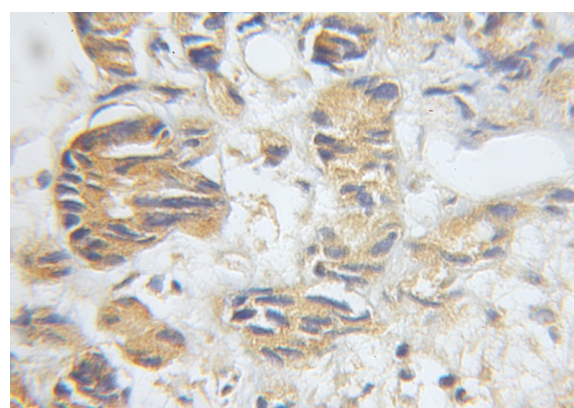
Recommended Dilution:

WB: 1:200-1:2000

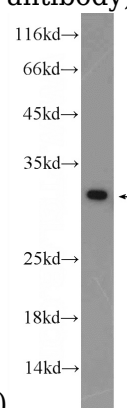
IHC: 1:20-1:200

IF: 1:10-1:100

## Validations



Immunohistochemical of paraffin-embedded human prostate cancer using Catalog No:109749(DCI antibody) at dilution of 1:50



(under 10x lens)

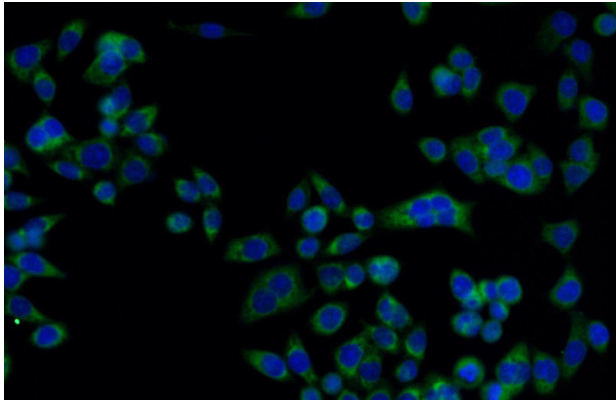
HEK-293 cells were subjected to SDS PAGE followed by western blot with Catalog No:109749(DCI Antibody) at dilution of 1:600

# DCI antibody



Catalog Number: 109749

---



Immunofluorescent analysis of BxPC-3 cells using Catalog No:109749(DCI Antibody) at dilution of 1:25 and Alexa Fluor 488-conjugated AffiniPure Goat Anti-Rabbit IgG(H+L)