

CUL3 antibody

Catalog Number: 109743

Product name

CUL3 antibody

IHC: 1:20-1:200

IF: 1:20-1:200

Specificity

Human, Mouse, Rat; other species not tested.

Antibody description

CUL3 Rabbit Polyclonal antibody. Positive WB detected in HeLa cells. Positive IHC detected in human prostate cancer tissue, human heart tissue. Positive IF detected in HEK-293 cells. Observed molecular weight by Western-blot: 89kd

Preparation

This antibody was obtained by immunization of CUL3 recombinant protein (Accession Number: NM_003590). Purification method: Antigen affinity purified.

Formulation

PBS with 0.1% sodium azide and 50% glycerol pH 7.3.

Storage

Store at -20°C. DO NOT ALIQUOT

Clonality

Polyclonal

Ig Type

Rabbit IgG

Applications

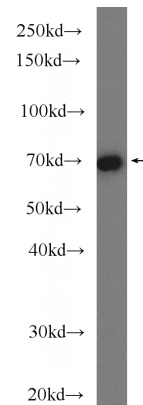
ELISA, IHC, WB, IF

Dilutions

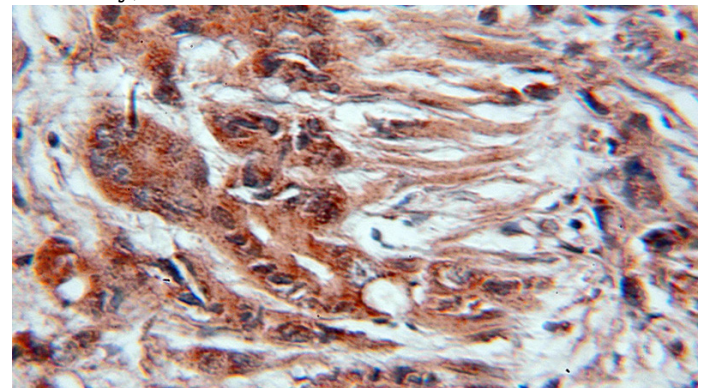
Recommended Dilution:

WB: 1:500-1:5000

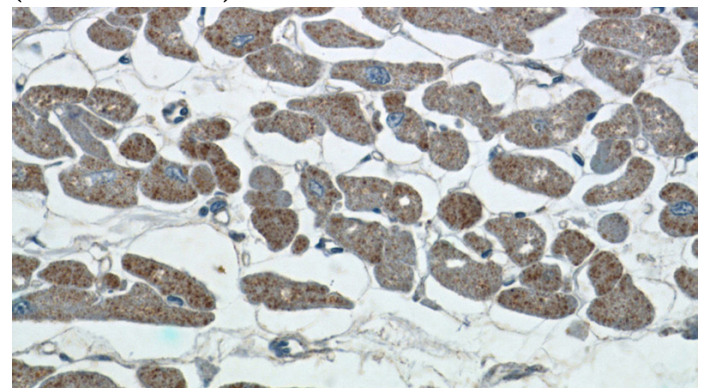
Validations



HeLa cells were subjected to SDS PAGE followed by western blot with Catalog No:109743(CUL3 Antibody) at dilution of 1:1000



Immunohistochemical of paraffin-embedded human prostate cancer using Catalog No:109743(CUL3 antibody) at dilution of 1:100 (under 10x lens)

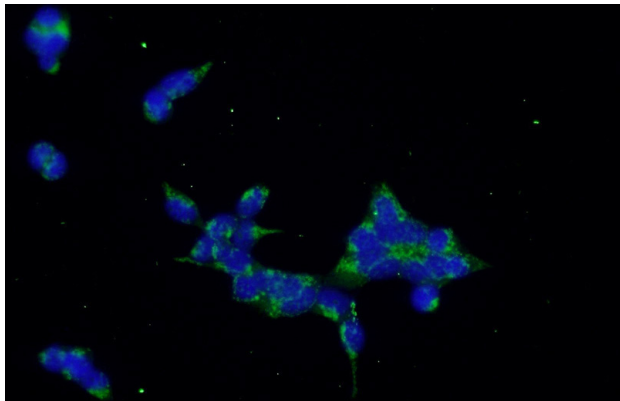


Immunohistochemistry of paraffin-embedded

CUL3 antibody

Catalog Number: 109743

human heart tissue slide using Catalog No:109743(CUL3 Antibody) at dilution of 1:50 (under 40x lens)



Immunofluorescent analysis of HEK-293 cells using Catalog No:109743(CUL3 Antibody) at dilution of 1:50 and Alexa Fluor 488-conjugated AffiniPure Goat Anti-Rabbit IgG(H+L)