

CTGF antibody

Catalog Number: 109723

Product name

CTGF antibody

WB: 1:200-1:2000

IHC: 1:20-1:200

Specificity

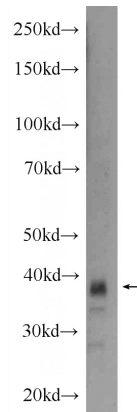
Human; other species not tested.

IF: 1:50-1:500

Antibody description

CTGF Rabbit Polyclonal antibody. Positive WB detected in mouse heart tissue, Transfected HEK-293 cells. Positive IF detected in HepG2 cells, HeLa cells. Positive IHC detected in human heart tissue, human colon cancer tissue, human hepat°Cirrhosis tissue. Observed molecular weight by Western-blot: 38 kDa

Validations



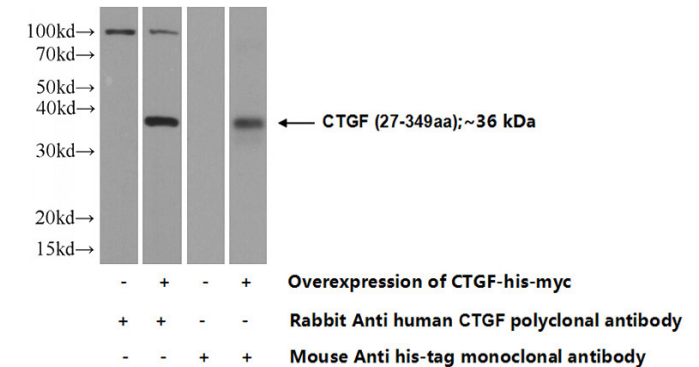
Preparation

This antibody was obtained by immunization of CTGF recombinant protein (Accession Number: NM_001901). Purification method: Antigen Affinity purified.

mouse heart tissue were subjected to SDS PAGE followed by western blot with Catalog No:109723(CTGF Antibody) at dilution of 1:600

Formulation

PBS with 0.02% sodium azide and 50% glycerol pH 7.3.



Storage

Store at -20°C. DO NOT ALIQUOT

Transfected HEK-293 cells were subjected to SDS PAGE followed by western blot with Catalog No:109723(CTGF Antibody) at dilution of 1:1000

Clonality

Polyclonal

Ig Type

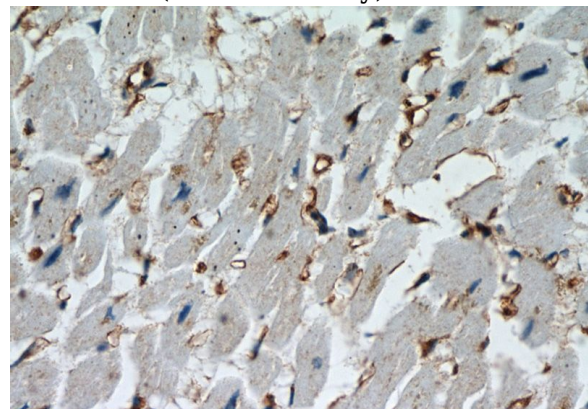
Rabbit IgG

Applications

ELISA, WB, IHC, IF

Dilutions

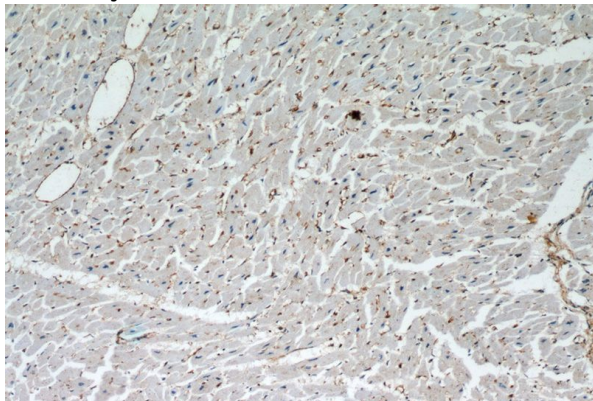
Recommended Dilution:



CTGF antibody

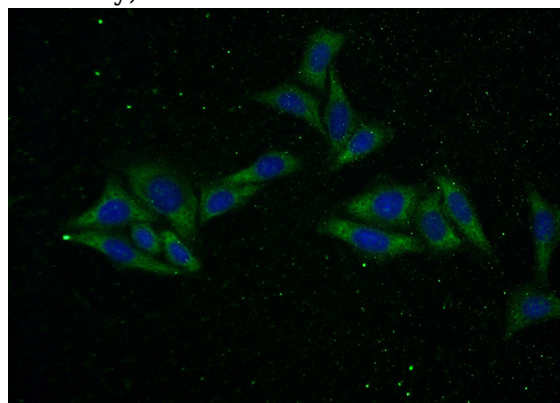
Catalog Number: 109723

Immunohistochemistry of paraffin-embedded human heart slide using Catalog No:109723(CTGF Antibody) at dilution of 1:50



Immunohistochemistry of paraffin-embedded human heart slide using Catalog No:109723(CTGF

Antibody) at dilution of 1:50



Immunofluorescent analysis of (-20oc Ethanol) fixed HepG2 cells using Catalog No:109723(CTGF Antibody) at dilution of 1:50 and Alexa Fluor 488-conjugated AffiniPure Goat Anti-Rabbit IgG(H+L)