

# CTDSPL2 antibody



Catalog Number: 109722

## Product name

CTDSPL2 antibody

## Specificity

Human, Mouse, Rat; other species not tested.

## Antibody description

CTDSPL2 Rabbit Polyclonal antibody. Positive IHC detected in human endometrial cancer tissue, human testis tissue. Positive WB detected in MCF7 cells, HeLa cells, HepG2 cells, human brain tissue, mouse eye tissue, mouse testis tissue, Y79 cells. Positive IP detected in mouse testis tissue. Observed molecular weight by Western-blot: 67 kDa

## Preparation

This antibody was obtained by immunization of CTDSPL2 recombinant protein (Accession Number: XM\_006720565). Purification method: Antigen affinity purified.

## Formulation

PBS with 0.02% sodium azide and 50% glycerol pH 7.3.

## Storage

Store at -20°C. DO NOT ALIQUOT

## Clonality

Polyclonal

## Ig Type

Rabbit IgG

## Applications

ELISA, WB, IHC, IP

## Dilutions

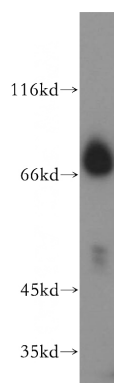
Recommended Dilution:

WB: 1:500-1:5000

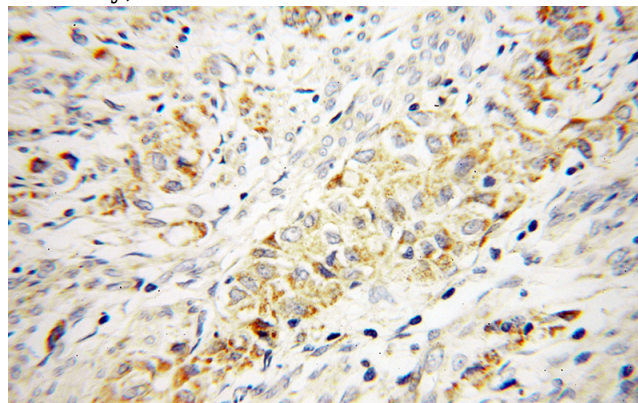
IP: 1:200-1:2000

IHC: 1:20-1:200

## Validations



MCF7 cells were subjected to SDS PAGE followed by western blot with Catalog No:109722(CTDSPL2 antibody) at dilution of 1:500

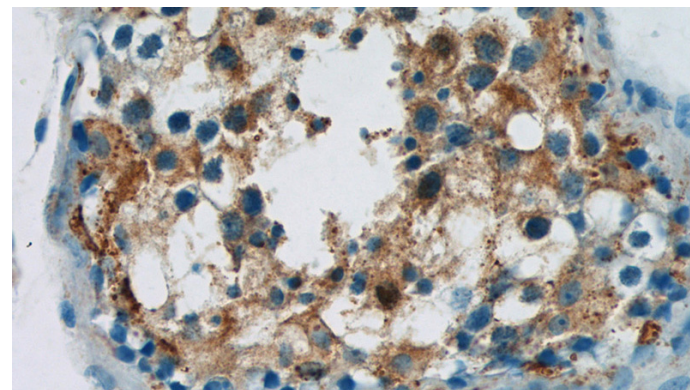
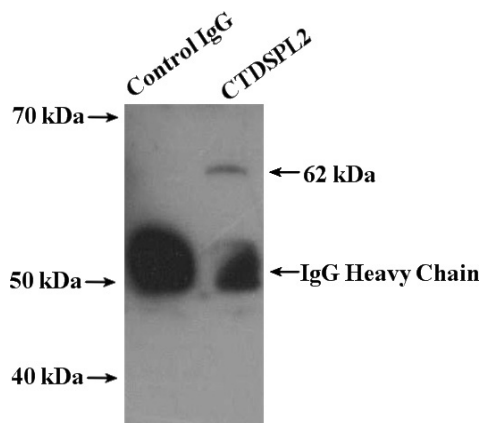


Immunohistochemical of paraffin-embedded human endometrial cancer using Catalog No:109722(CTDSPL2 antibody) at dilution of 1:100 (under 40x lens)

# CTDSPL2 antibody

Catalog Number: 109722

---



Immunohistochemistry of paraffin-embedded human testis tissue slide using Catalog No:109722(CTDSPL2 Antibody) at dilution of 1:50 (under 40x lens)

IP Result of anti-CTDSPL2 (IP:Catalog No:109722, 4ug; Detection:Catalog No:109722 1:500) with mouse testis tissue lysate 4400ug.